

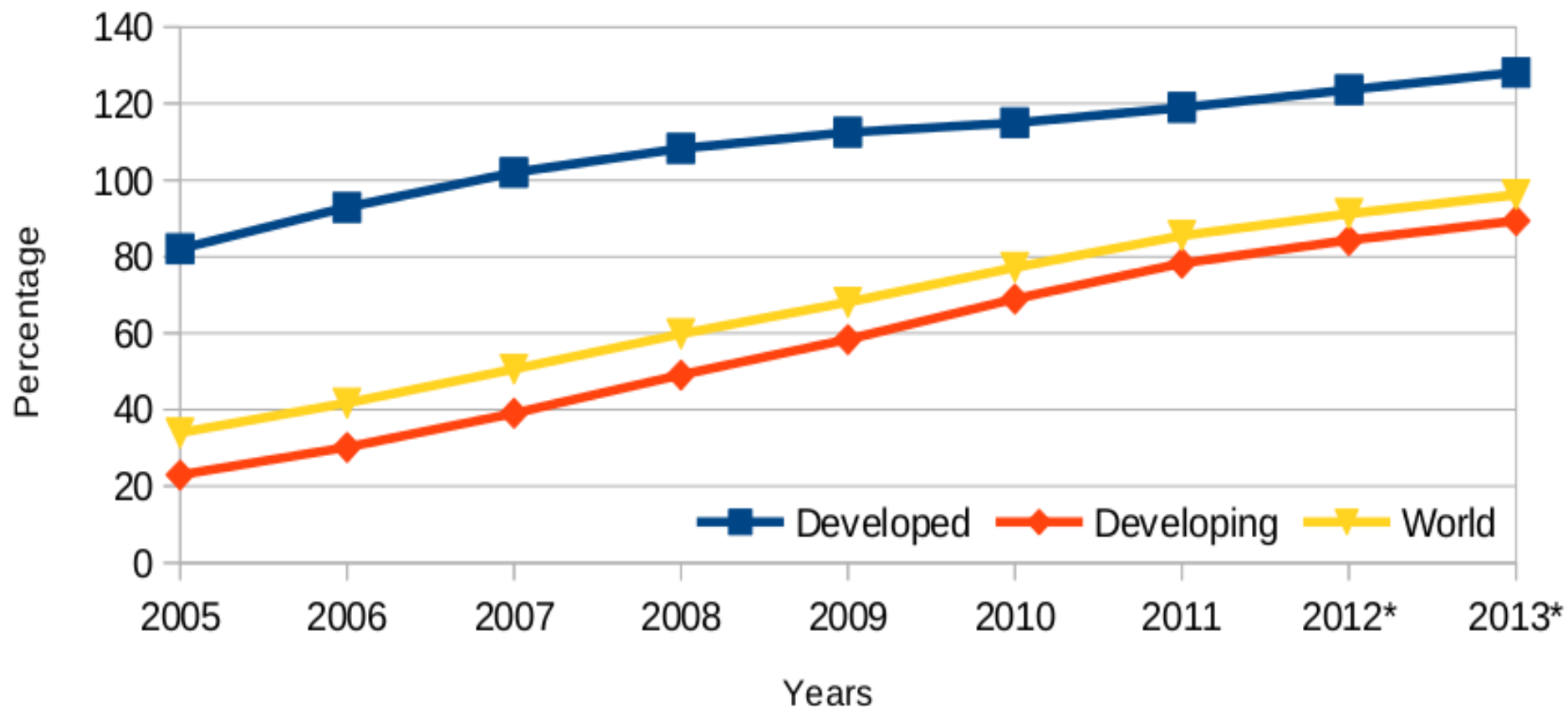
Kwiizya: Local Cellular Network Services in Remote Areas

Mariya Zheleva,

Arghyadip Paul, David Johnson and Elizabeth Belding

University of California Santa Barbara

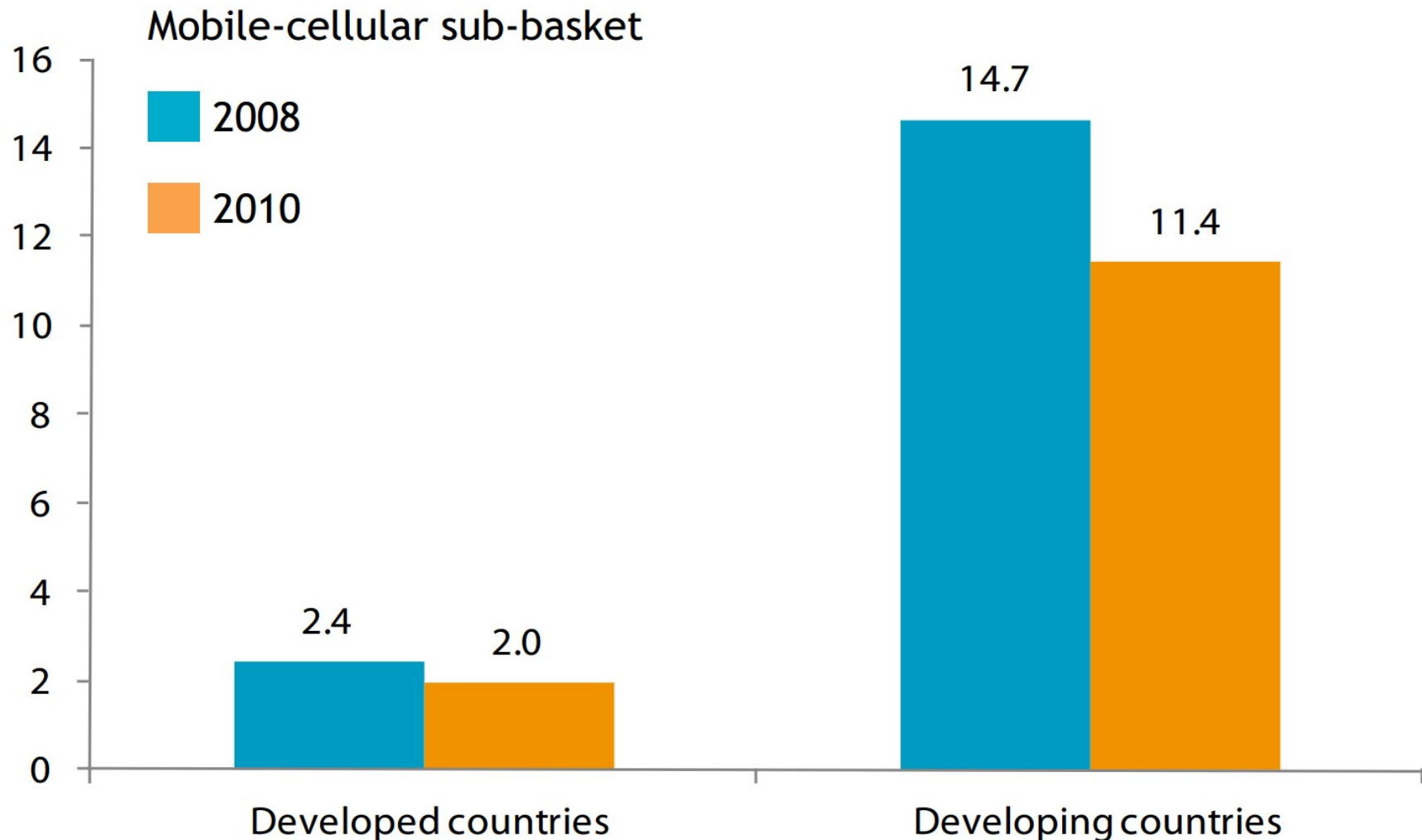
Mobile-cellular subscriptions



Source: ITU

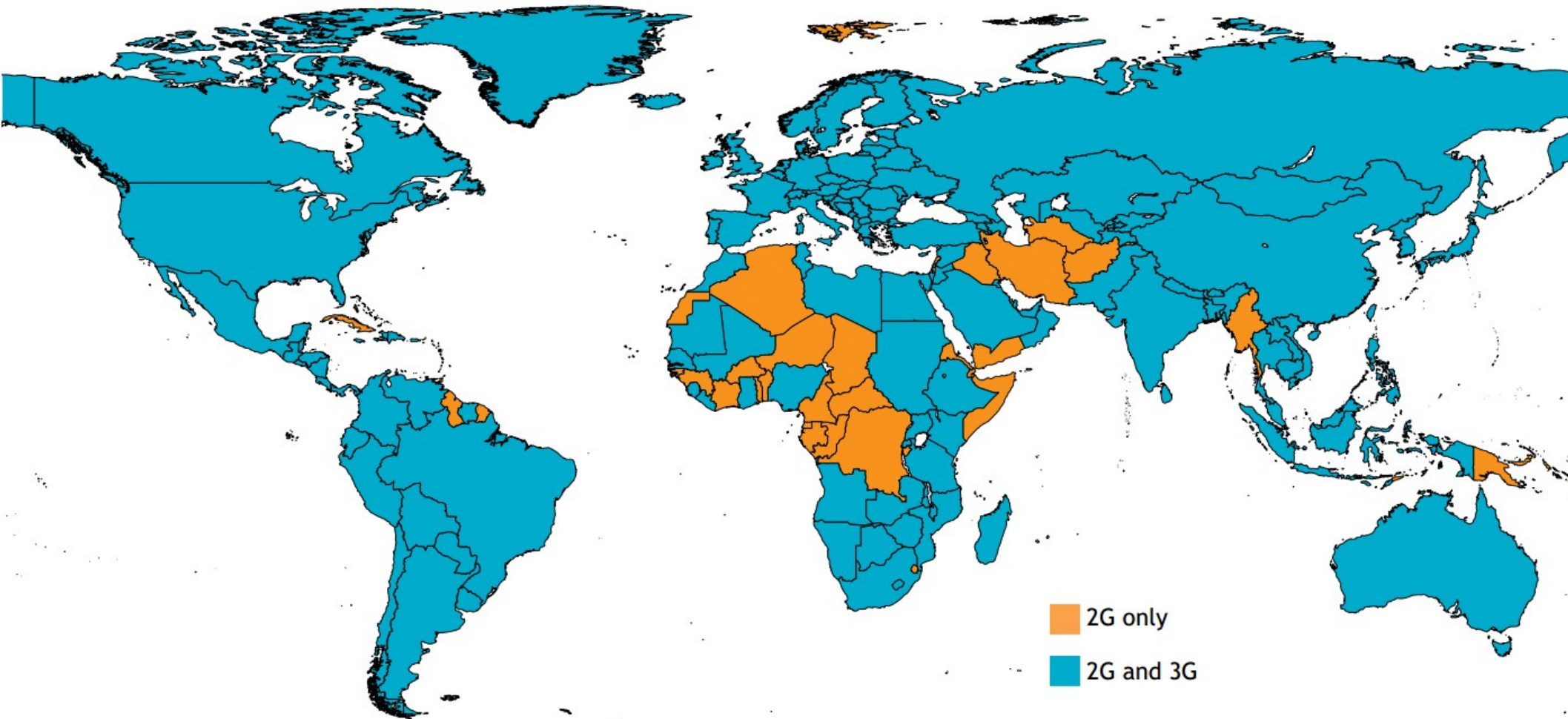
* Estimates

Affordability and Accessibility



Source: ITU

Affordability and Accessibility



Source: ITU

“Mobile network operators find it commercially infeasible to operate in rural areas.”

World Bank's 2012 report on
Maximizing Mobile

Goal:

Low-cost cellular network architecture with extensions for SMS-based applications.

Means:

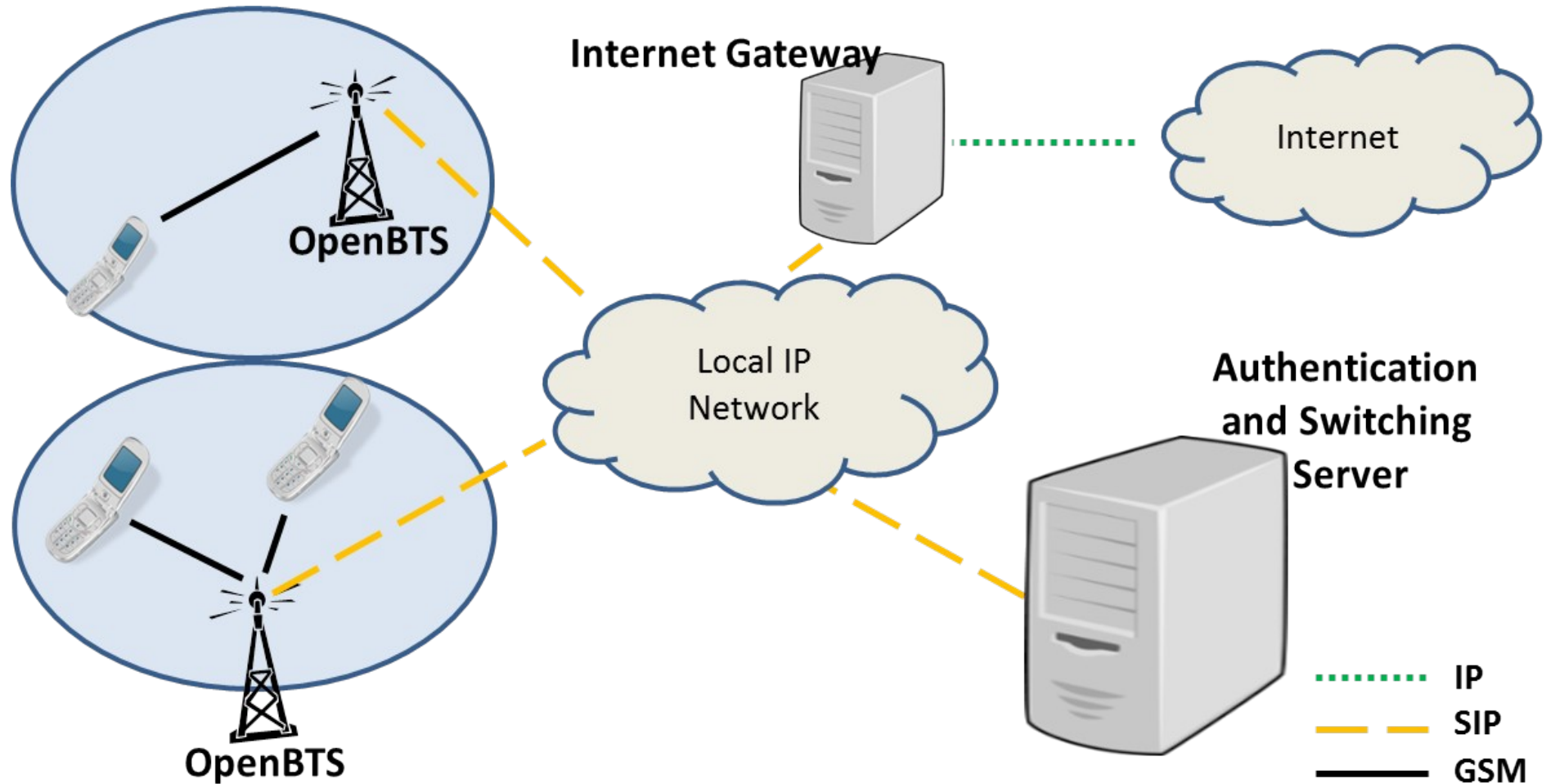
- Free, open-source software
- Software-Defined Radio (SDR) hardware
- GSM-compatible
 - No need of user device modifications

Macha, Zambia



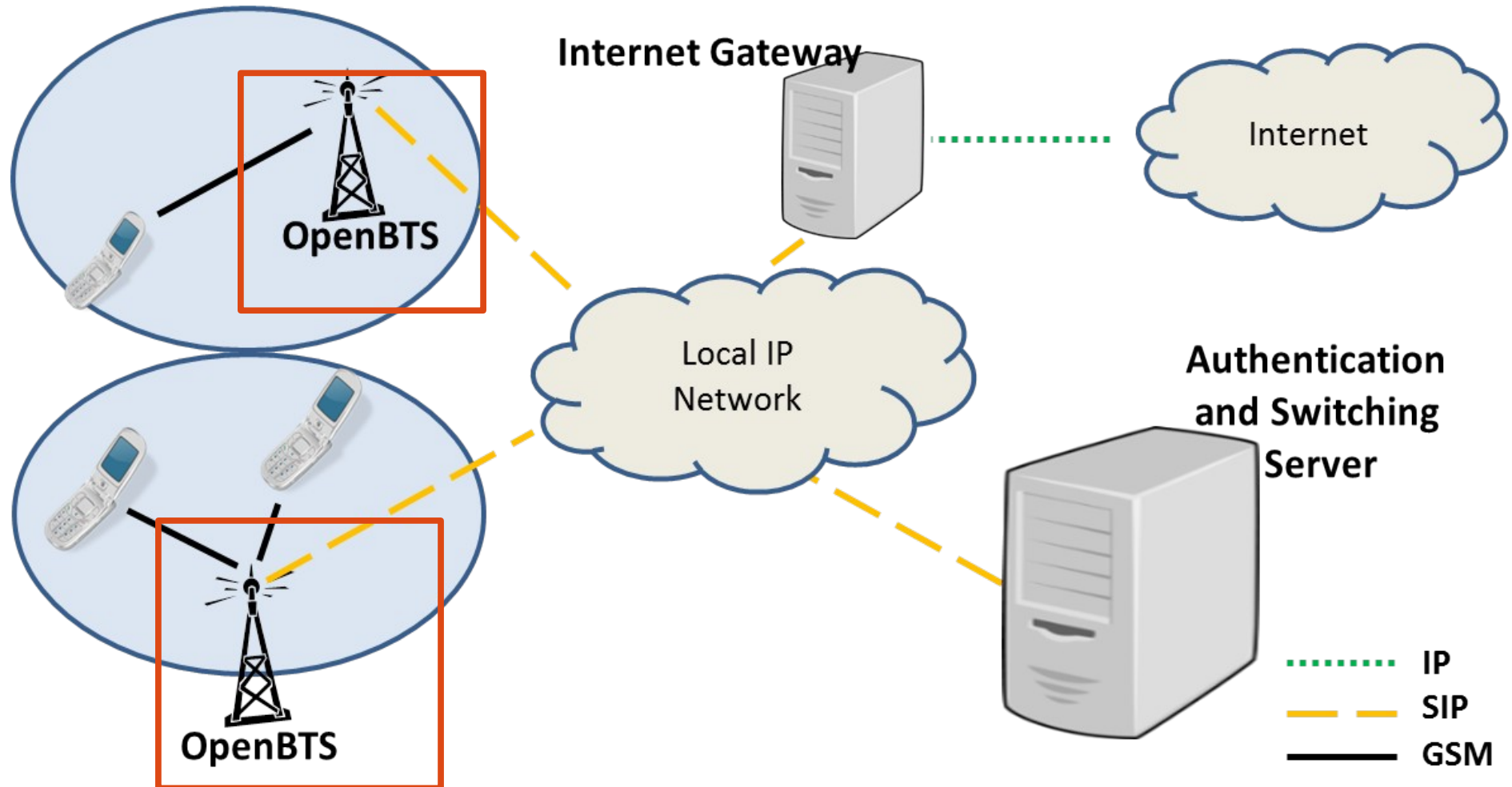
Source: Google Maps

Kwiizya* Architecture



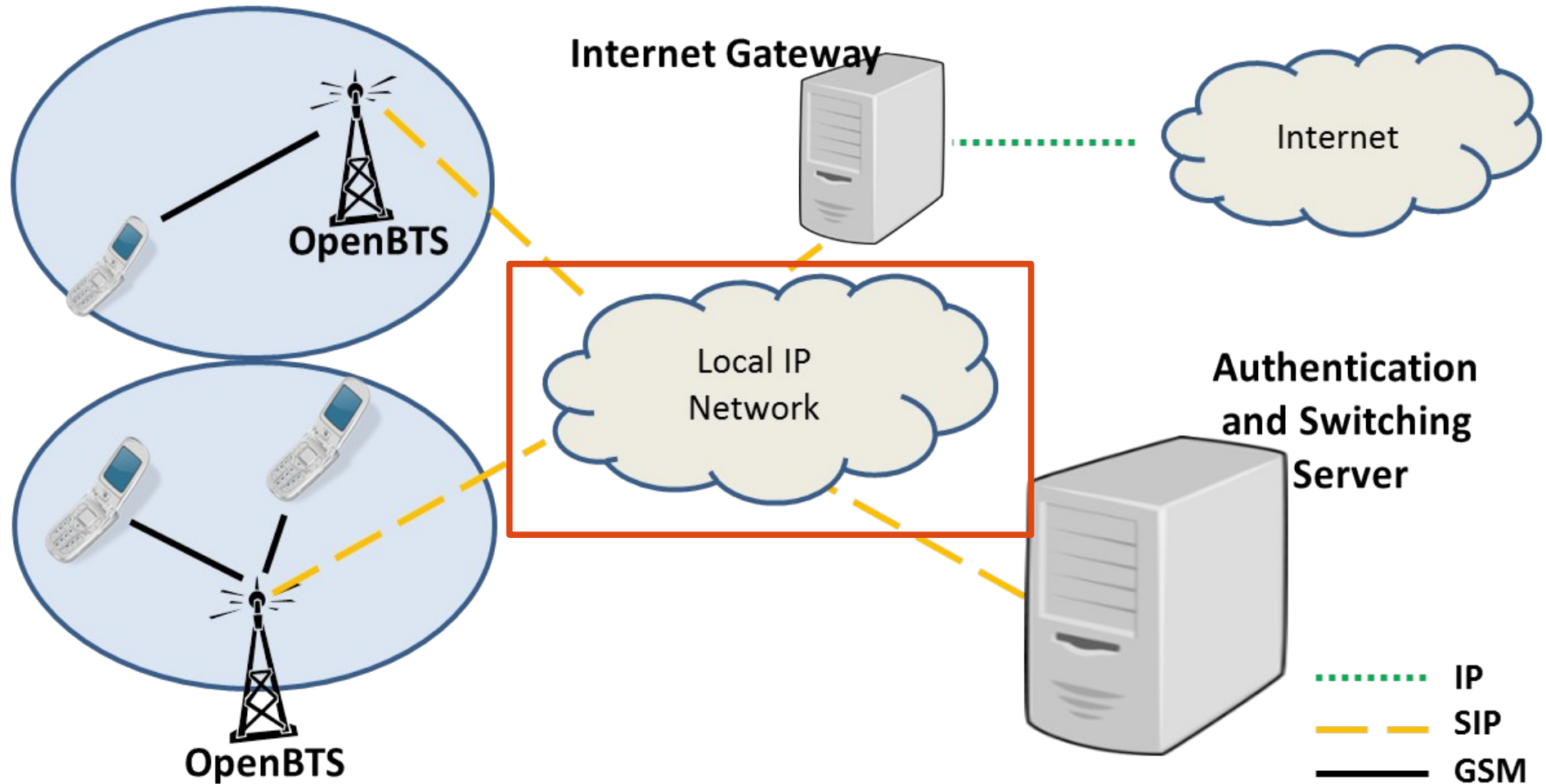
* Kwiizya means "to chat" in Tonga

Kwiizya* Architecture



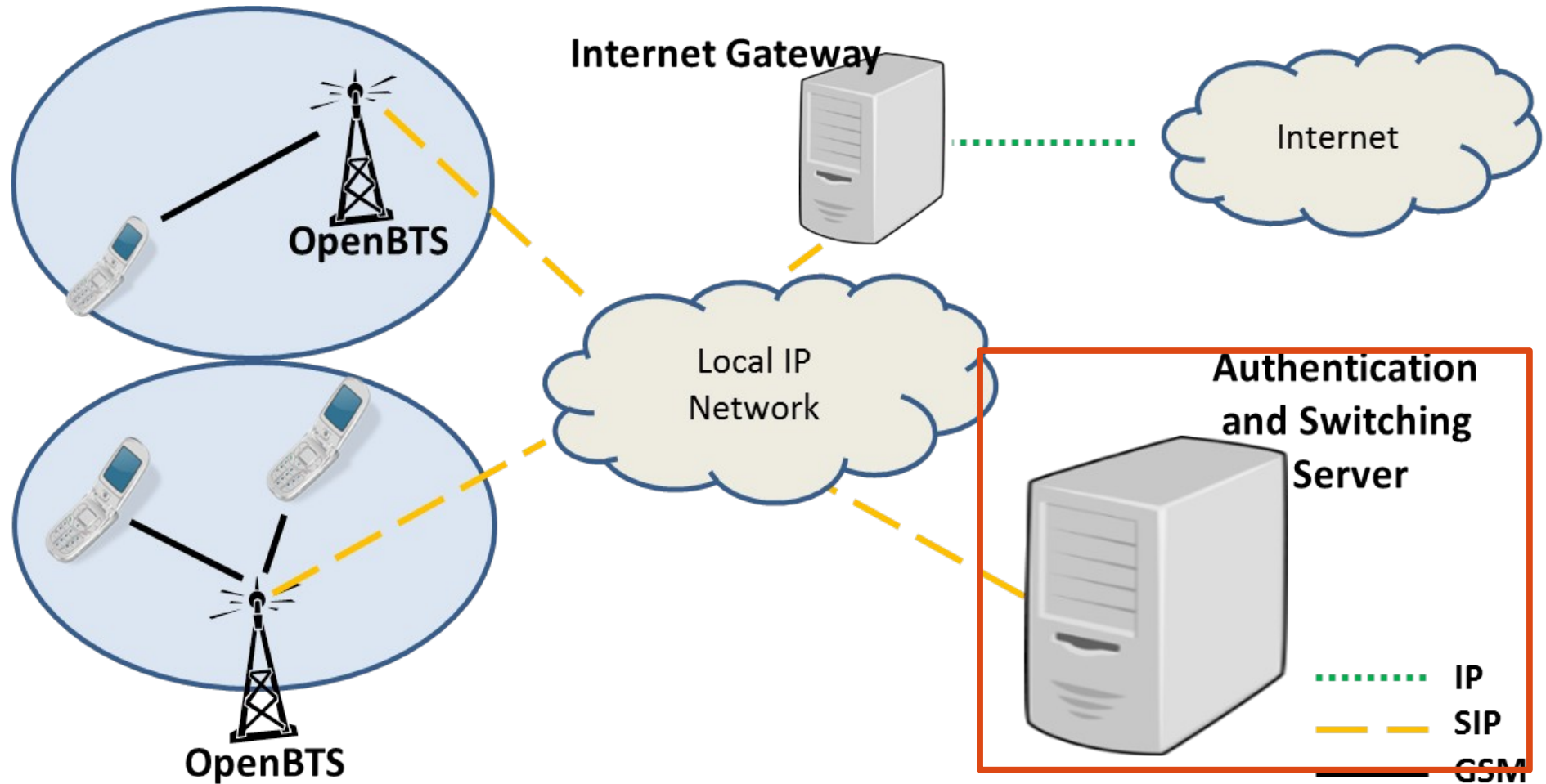
* Kwiizya means "to chat" in Tonga

Kwiizya* Architecture



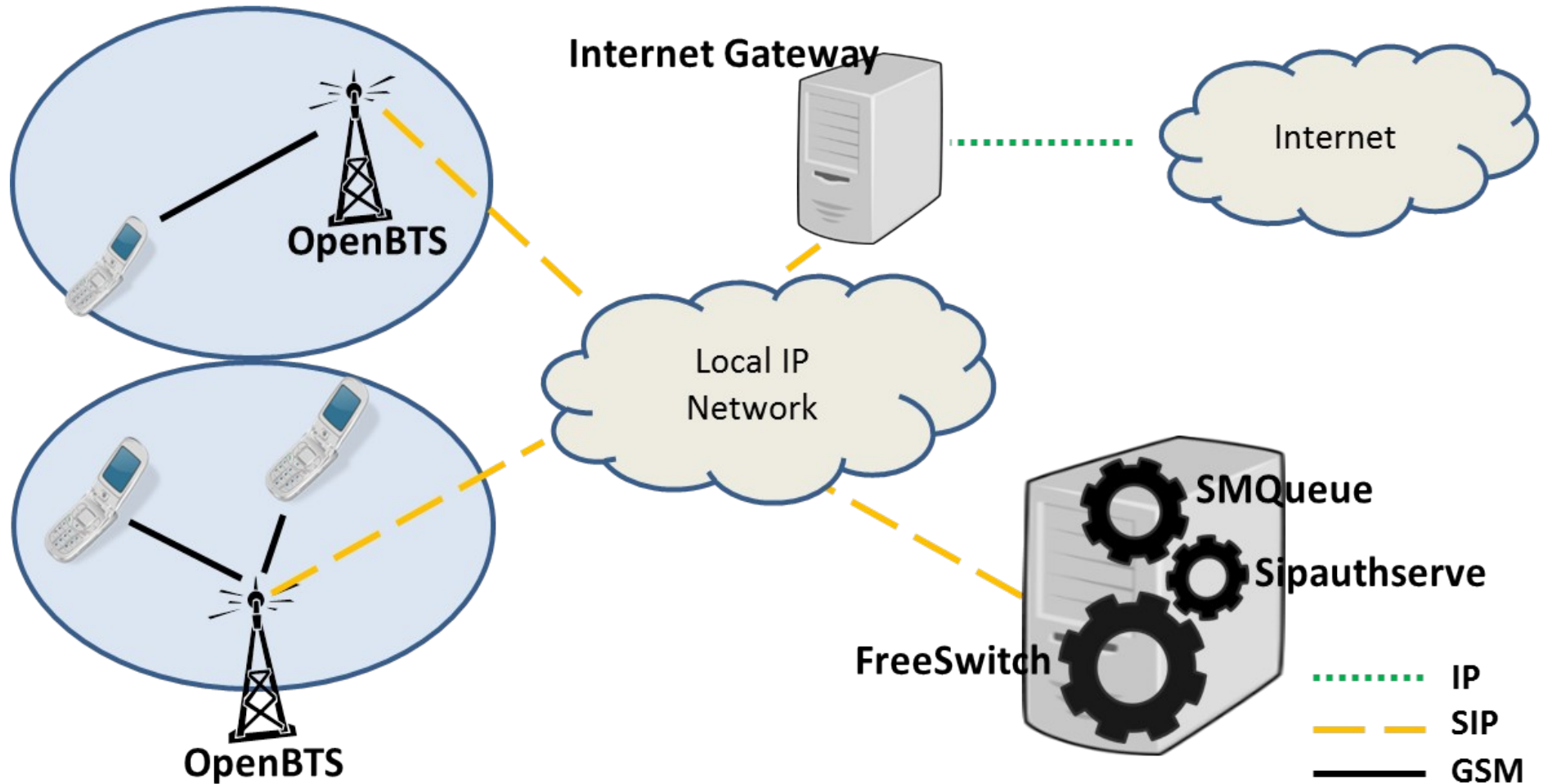
* Kwiizya means “to chat” in Tonga

Kwiizya* Architecture



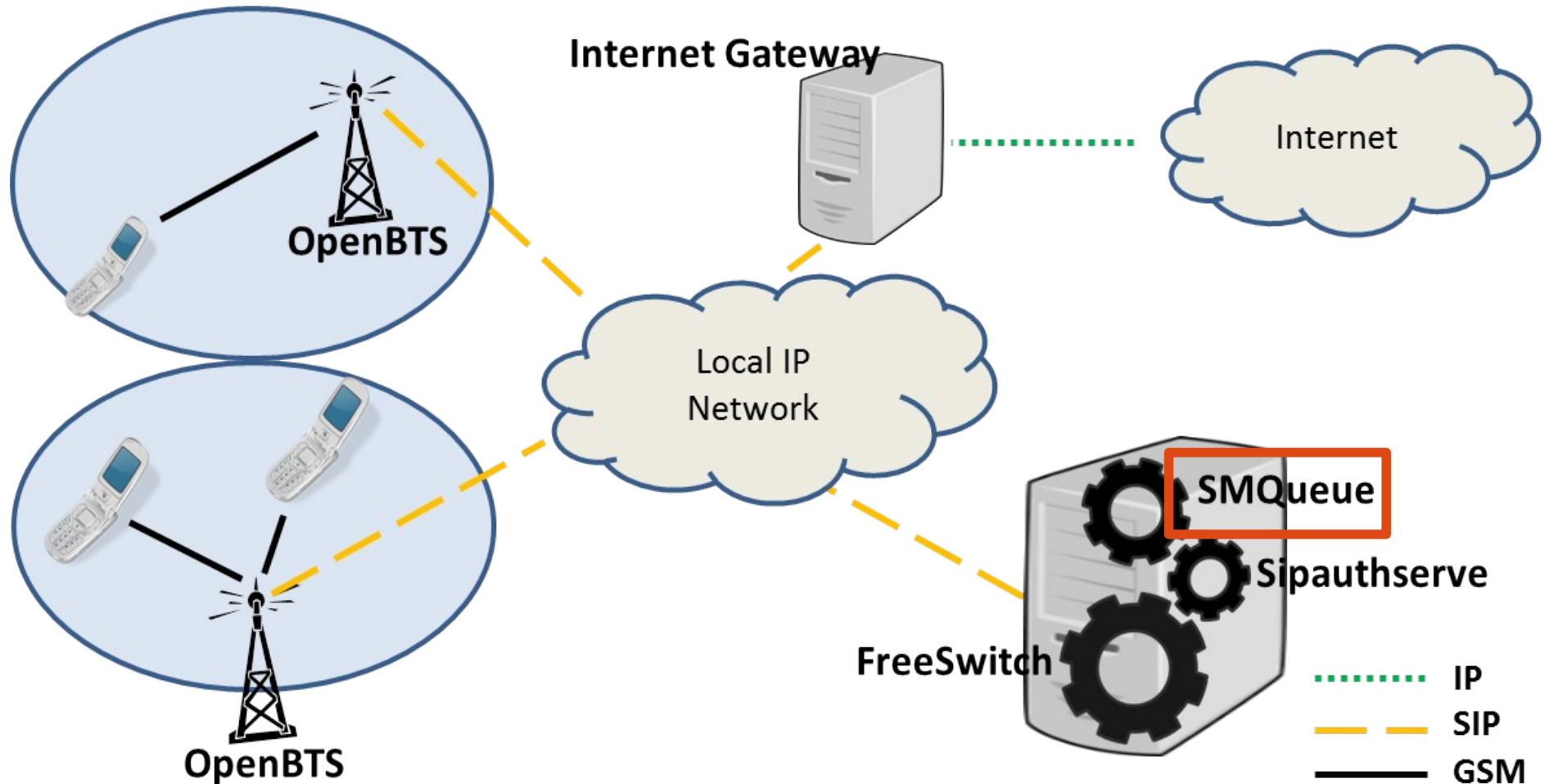
* Kwiizya means "to chat" in Tonga

Kwiizya* Architecture



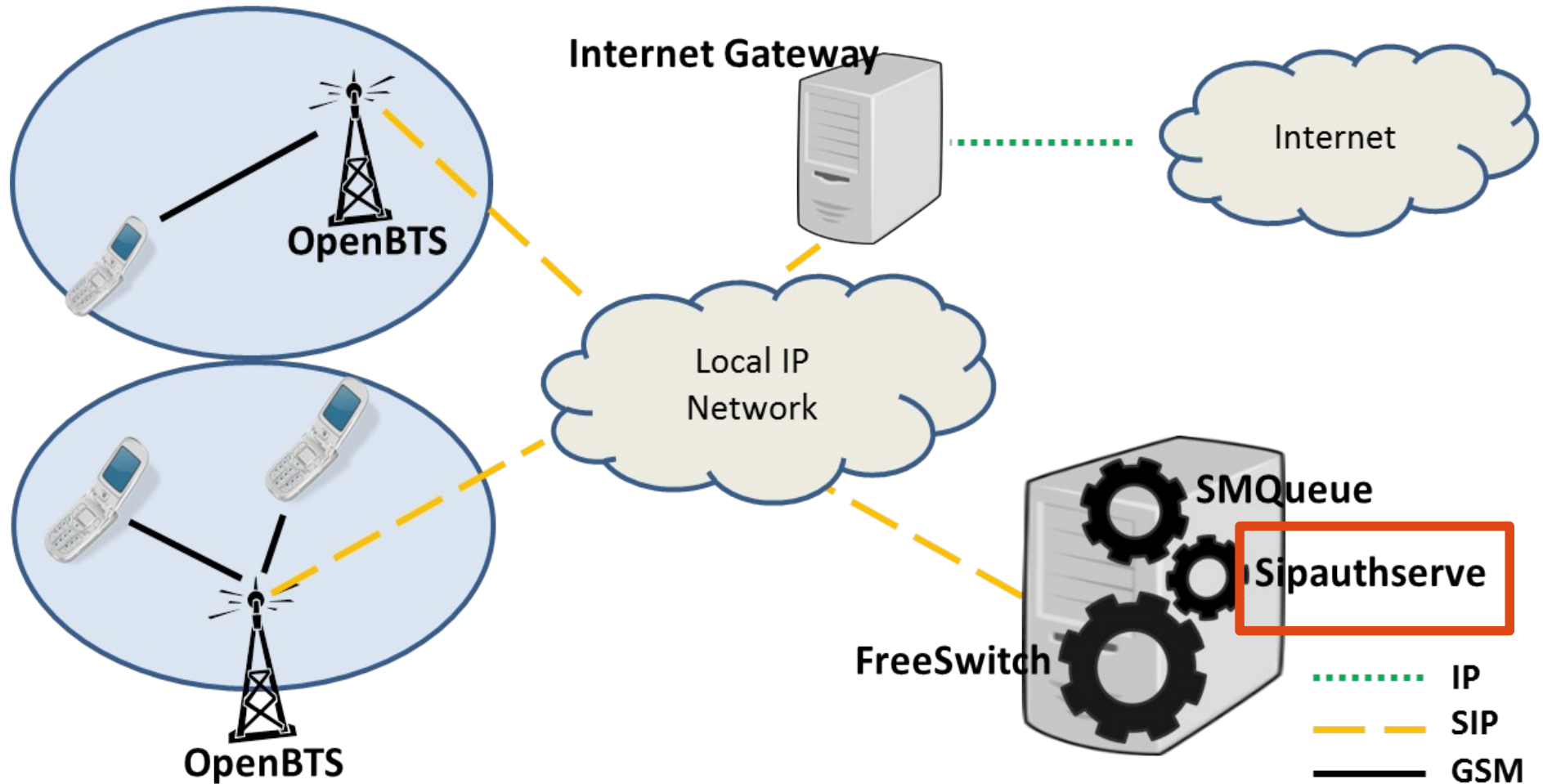
* Kwiizya means "to chat" in Tonga

Kwiizya* Architecture



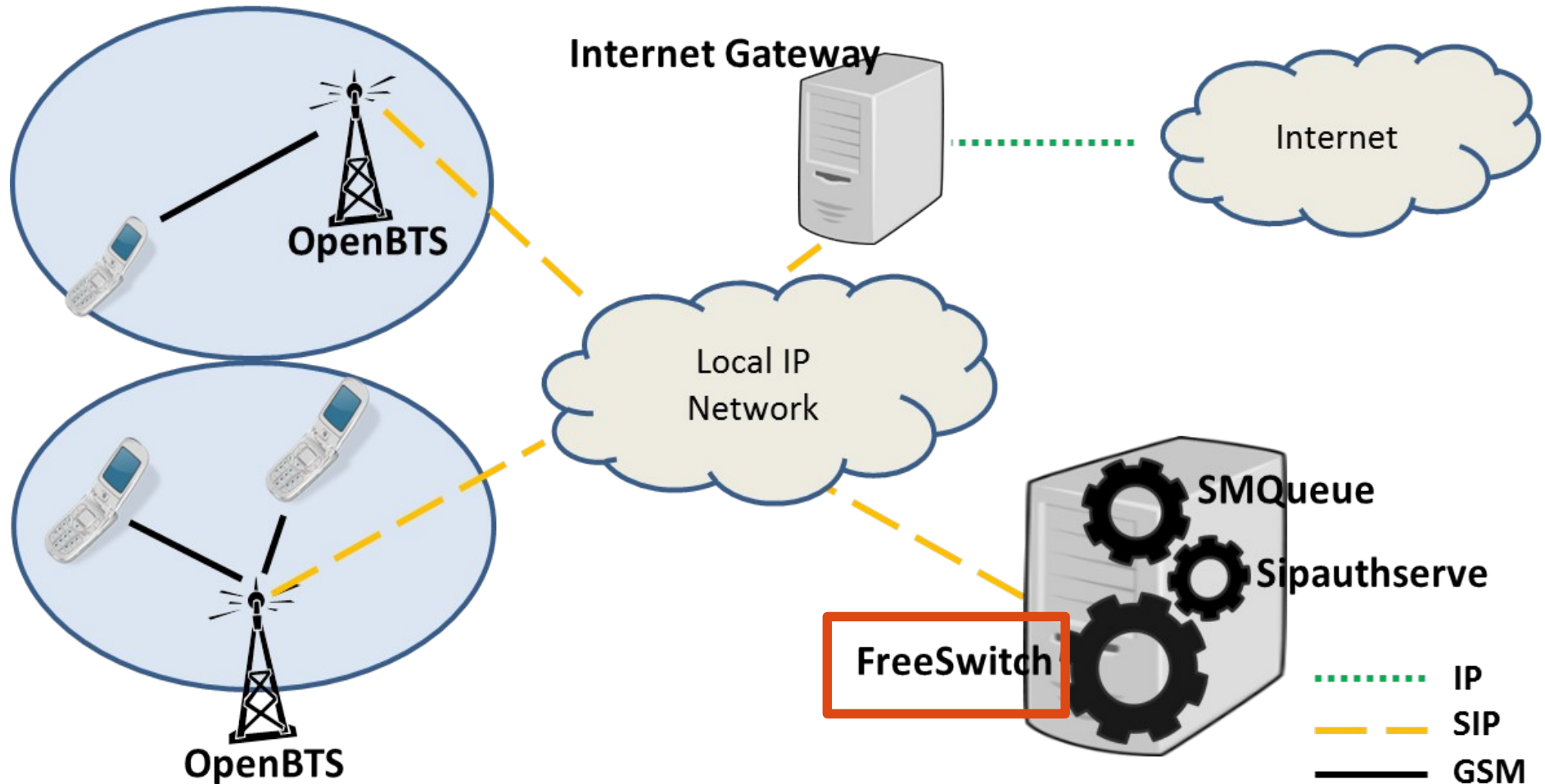
* Kwiizya means "to chat" in Tonga

Kwiizya* Architecture



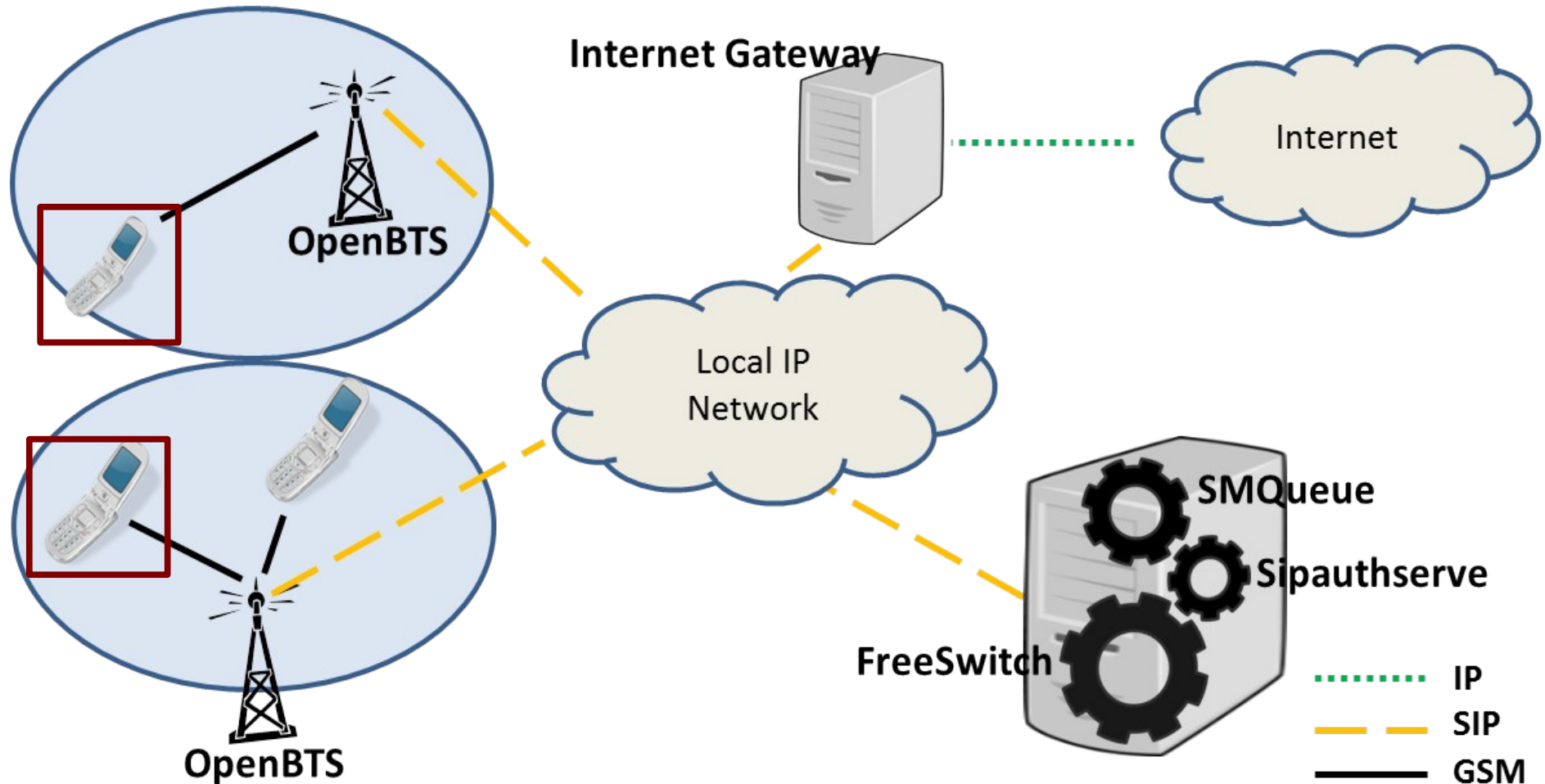
* Kwiizya means "to chat" in Tonga

Kwiizya* Architecture



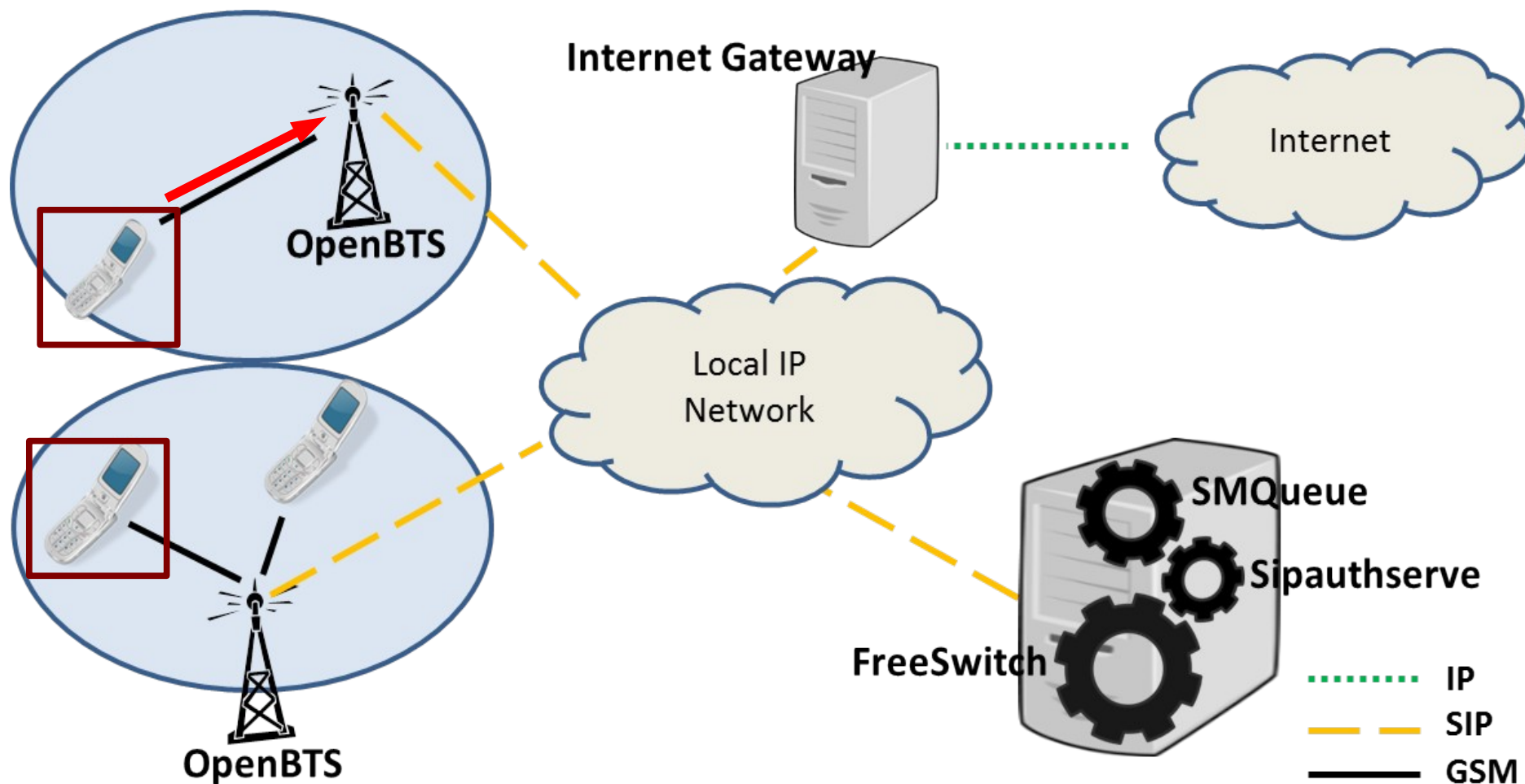
* Kwiizya means "to chat" in Tonga

Kwiizya* Call Switching



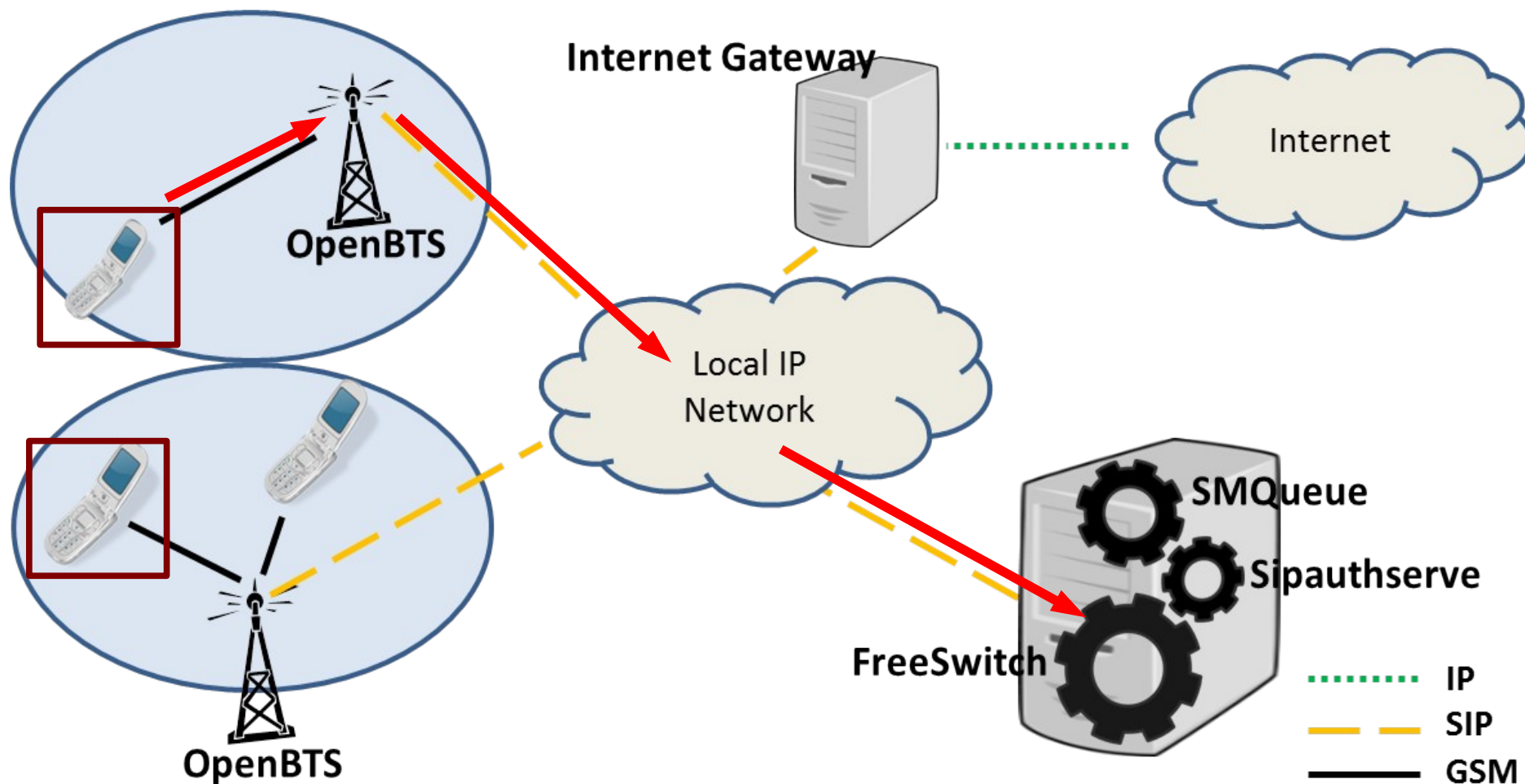
* Kwiizya means "to chat" in Tonga

Kwiizya* Call Switching



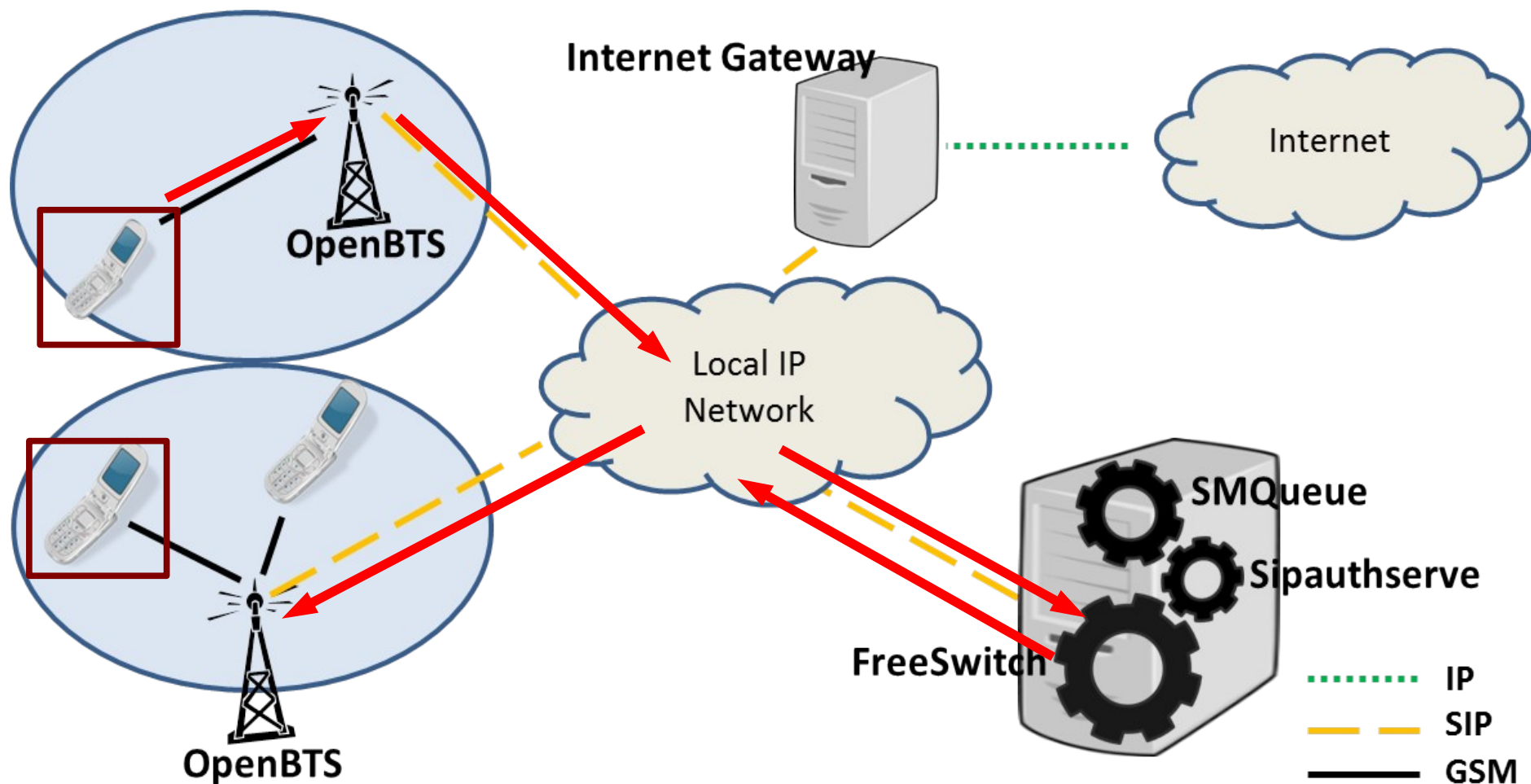
* Kwiizya means "to chat" in Tonga

Kwiizya* Call Switching



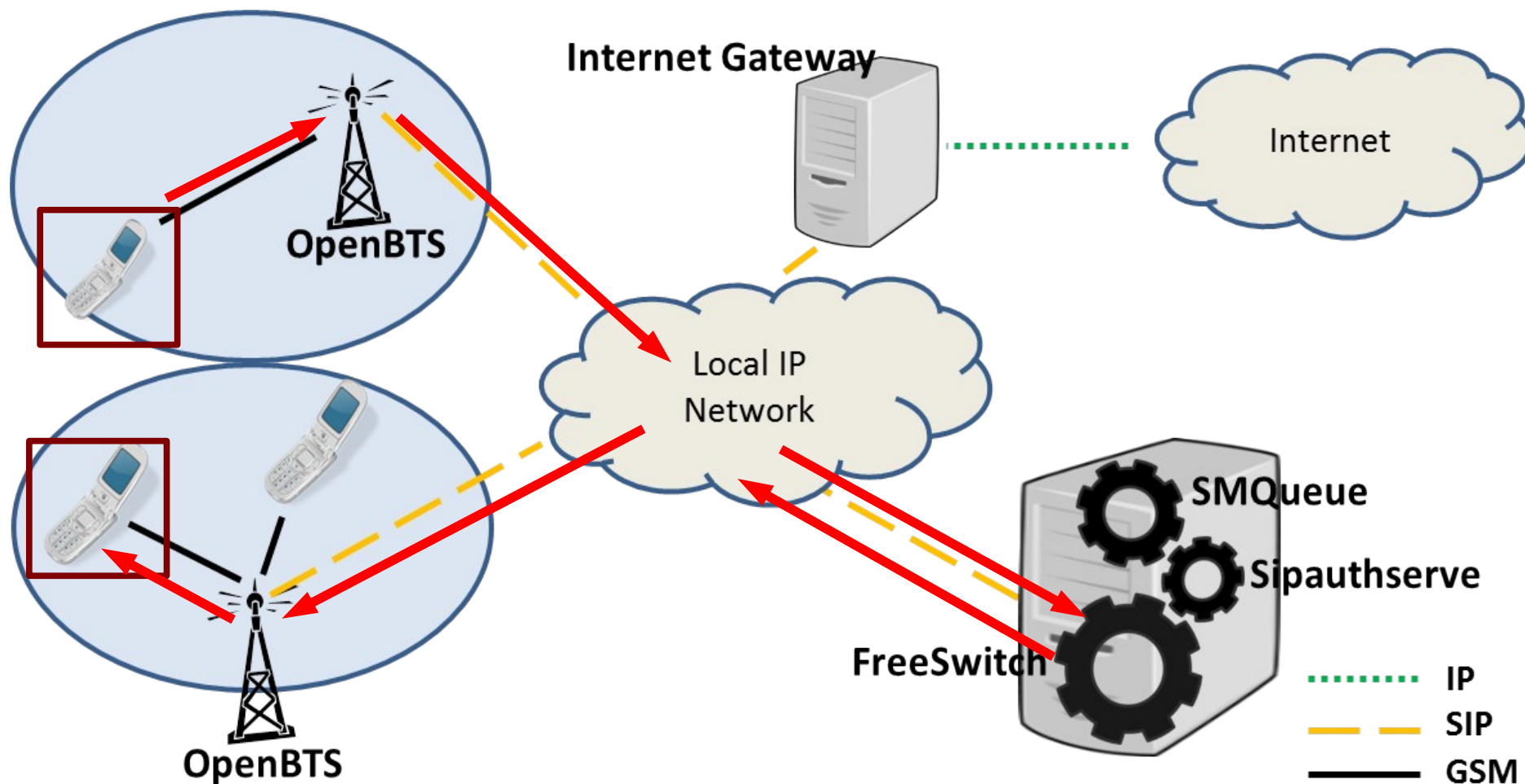
* Kwiizya means "to chat" in Tonga

Kwiizya* Call Switching



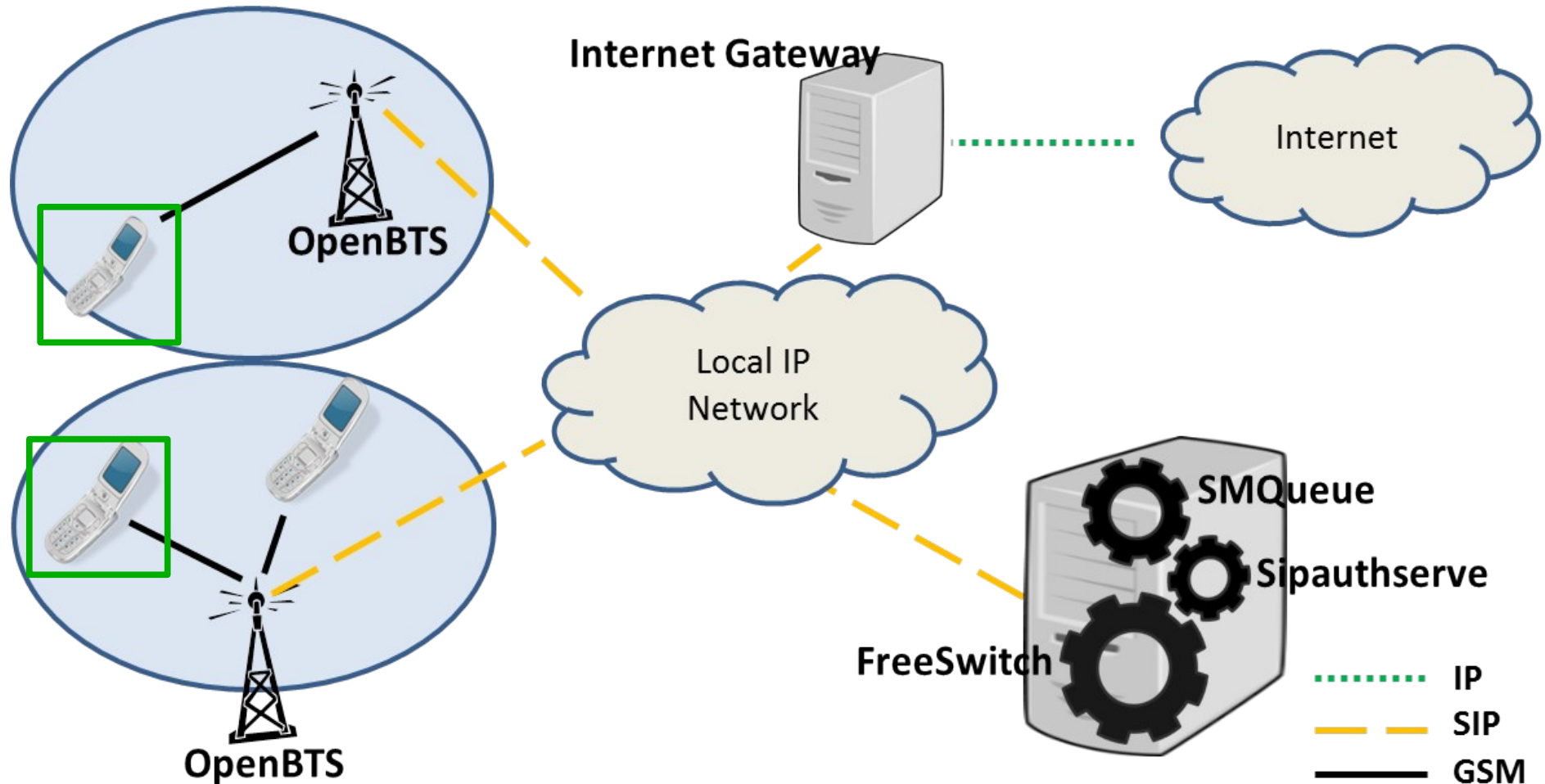
* Kwiizya means “to chat” in Tonga

Kwiizya* Call Switching



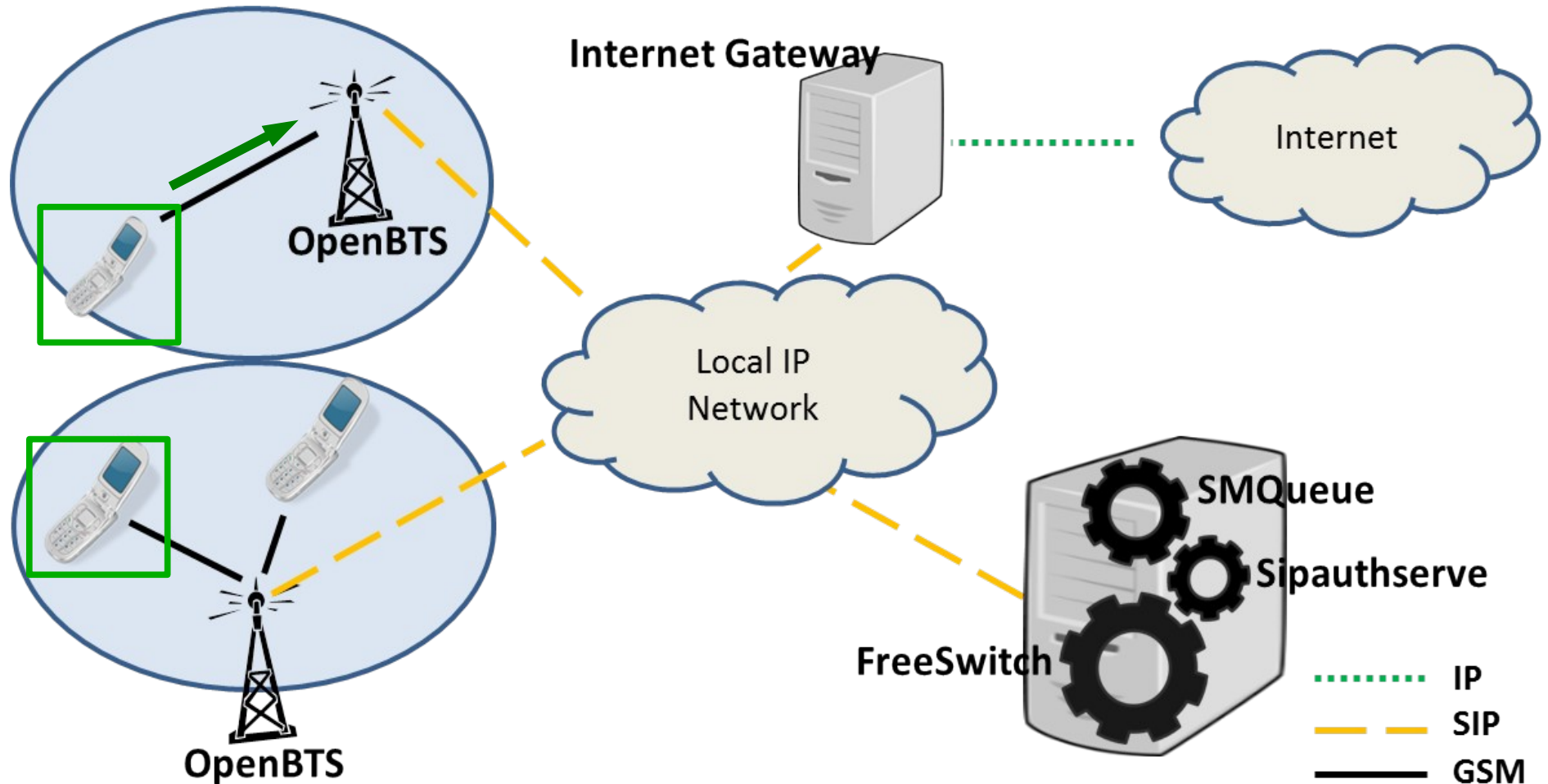
* Kwiizya means "to chat" in Tonga

Kwiizya* SMS Switching



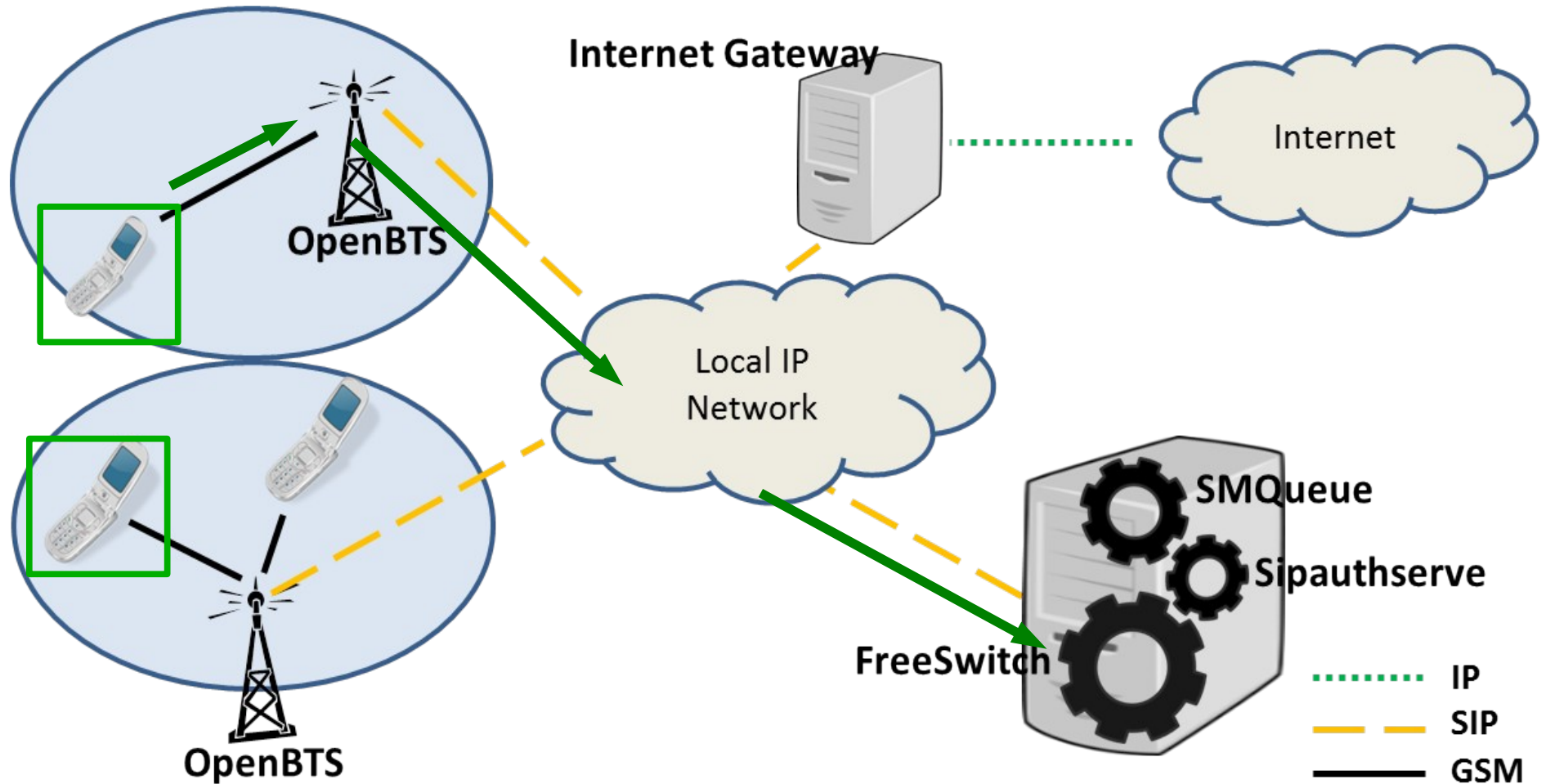
* Kwiizya means "to chat" in Tonga

Kwiizya* SMS Switching



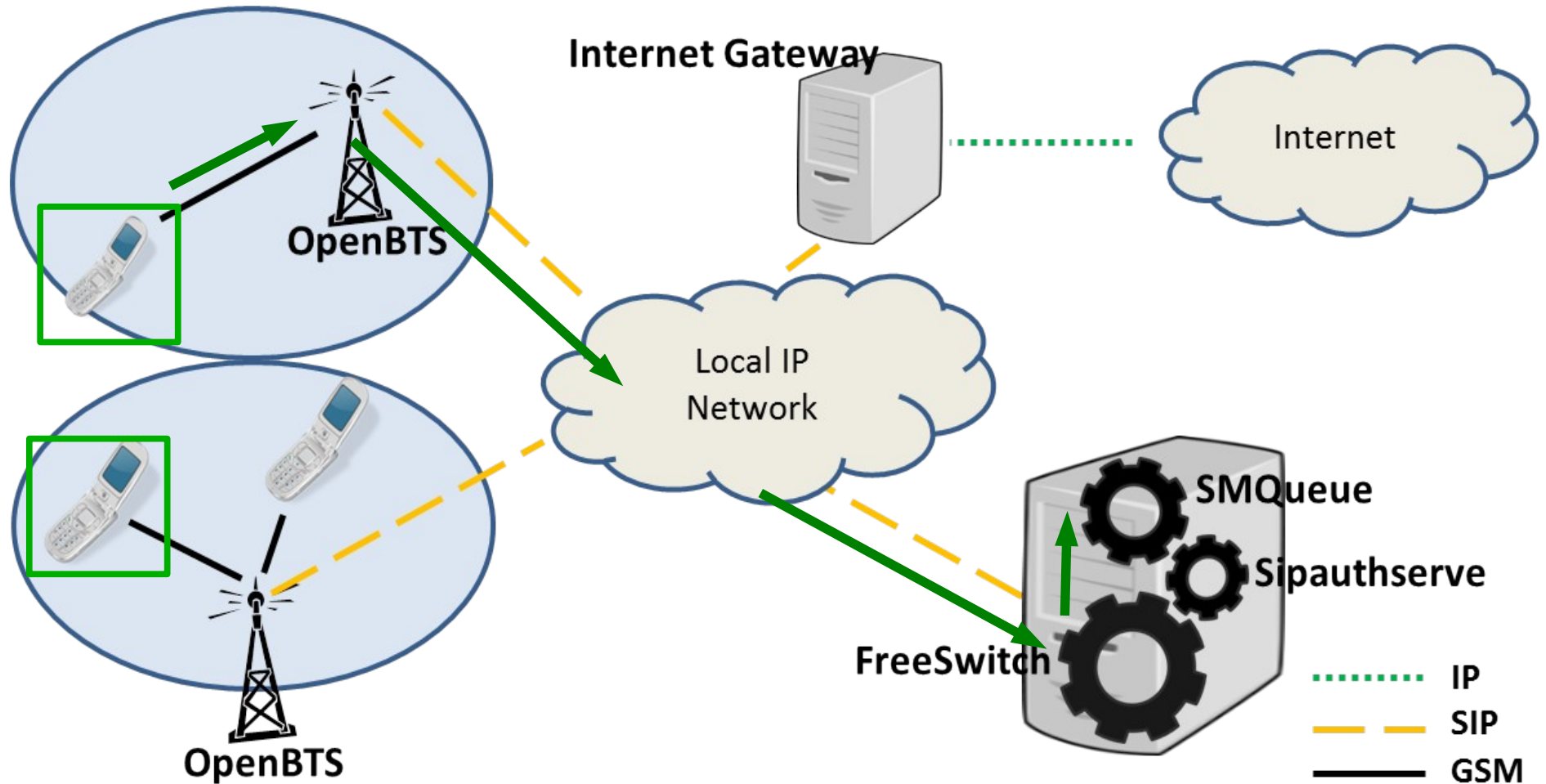
* Kwiizya means "to chat" in Tonga

Kwiizya* SMS Switching



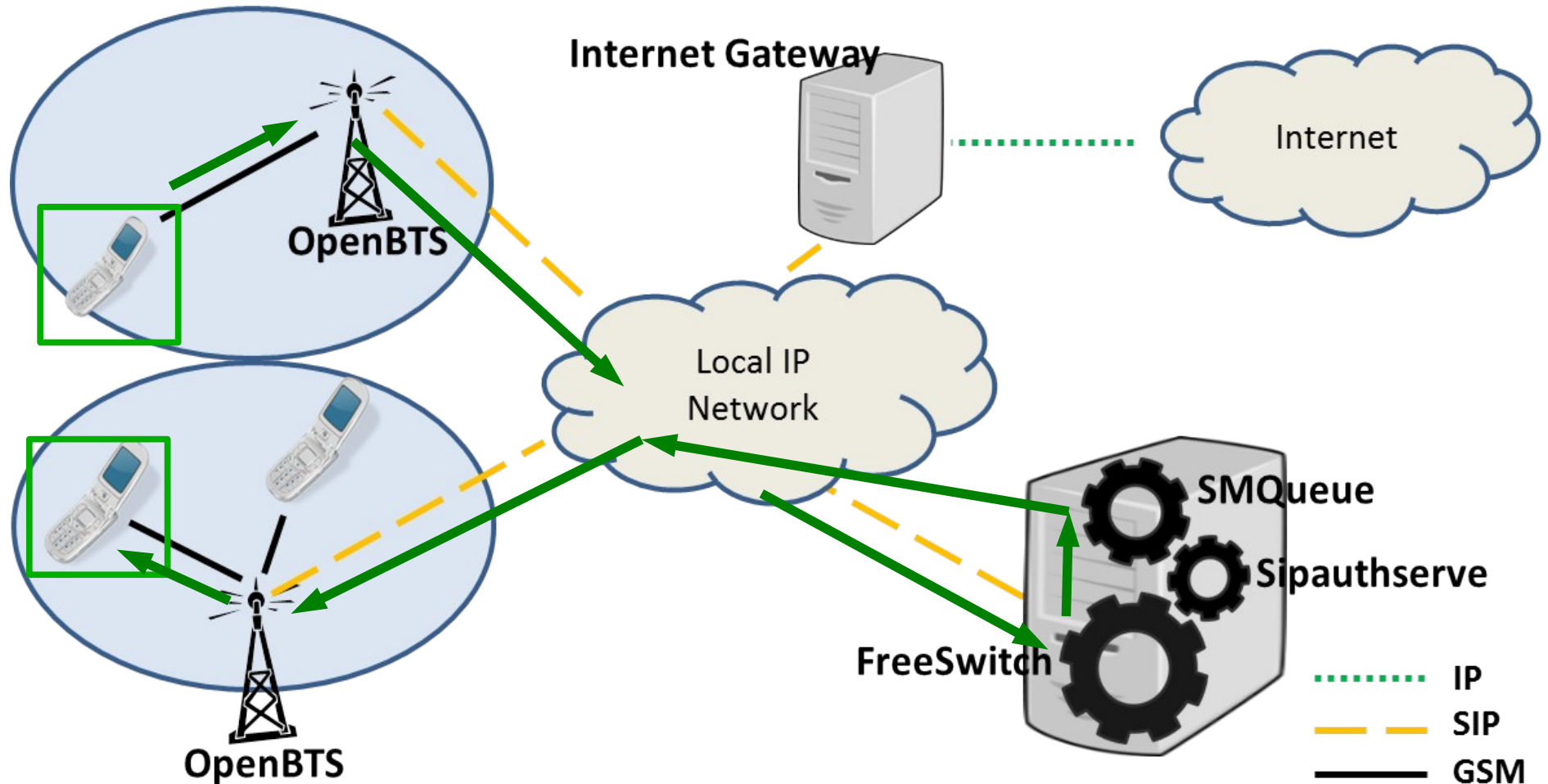
* Kwiizya means "to chat" in Tonga

Kwiizya* SMS Switching



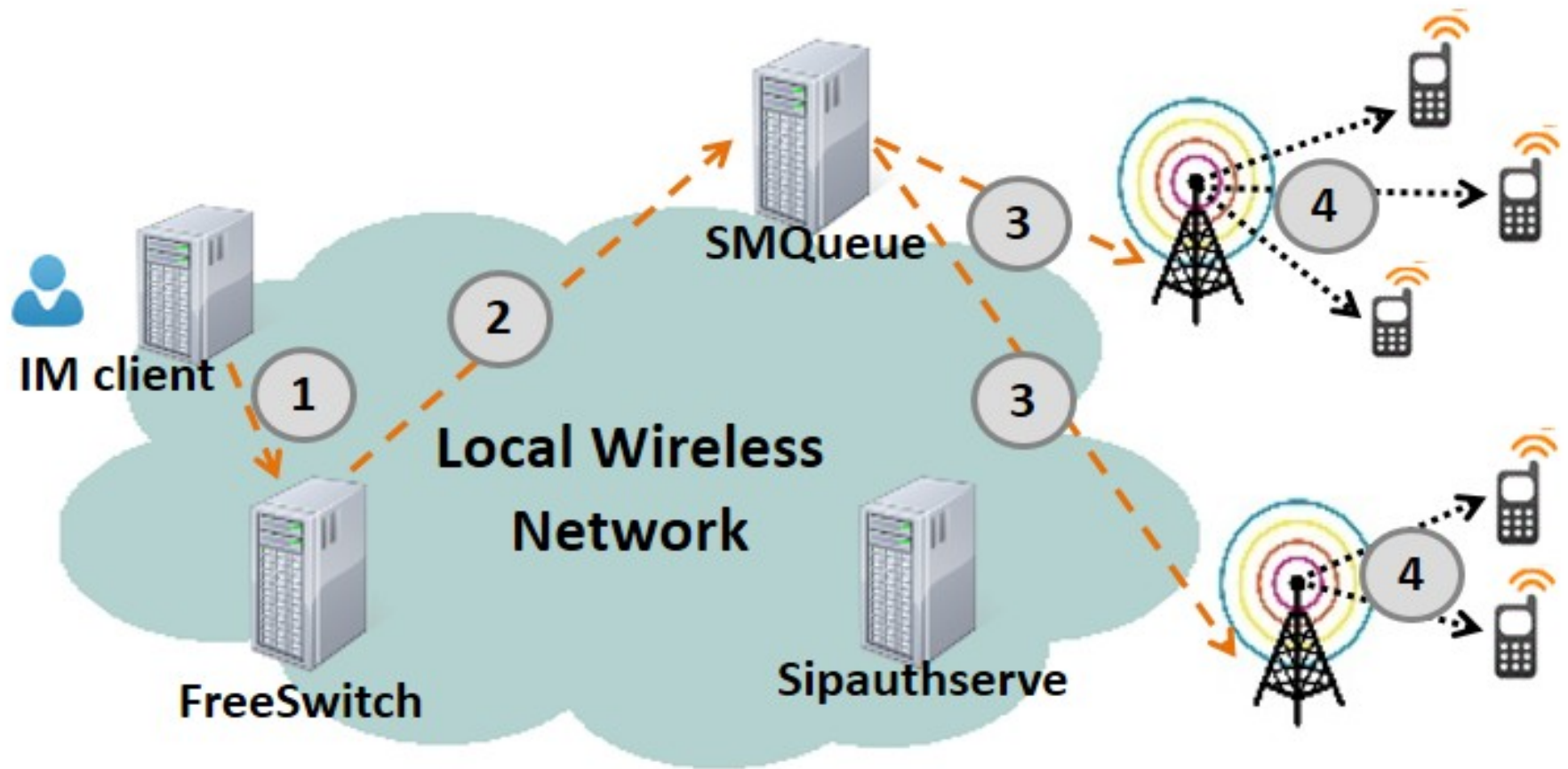
* Kwiizya means "to chat" in Tonga

Kwiizya* SMS Switching

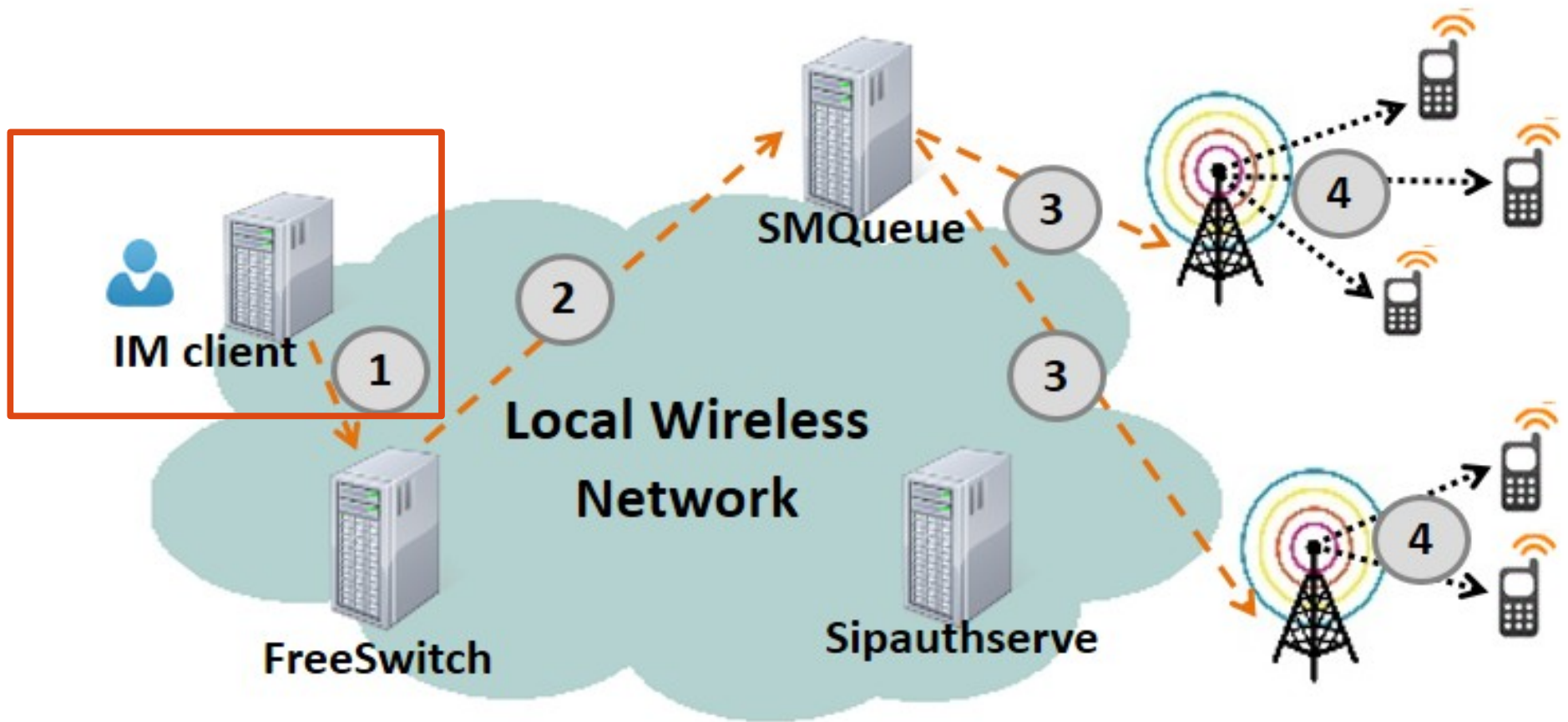


* Kwiizya means "to chat" in Tonga

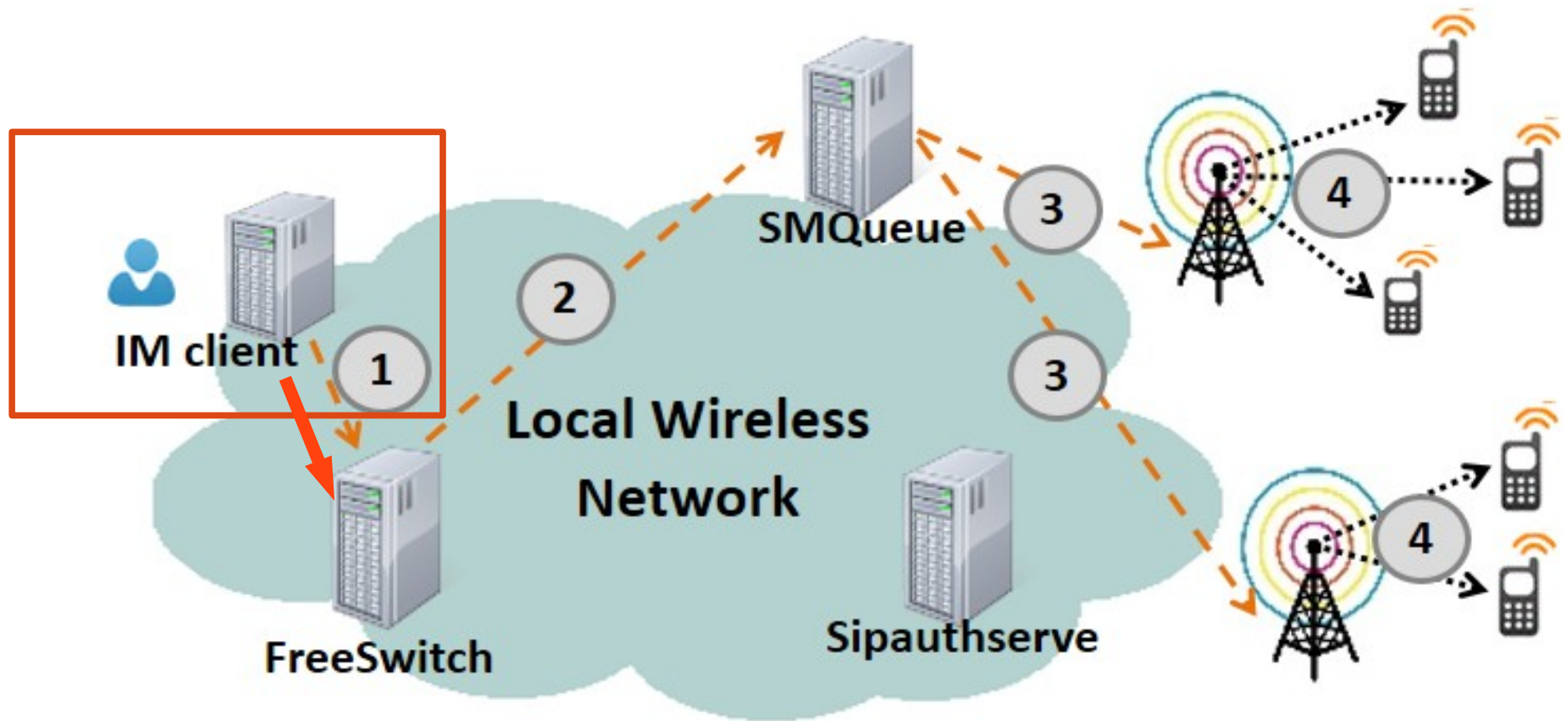
Instant Message to SMS



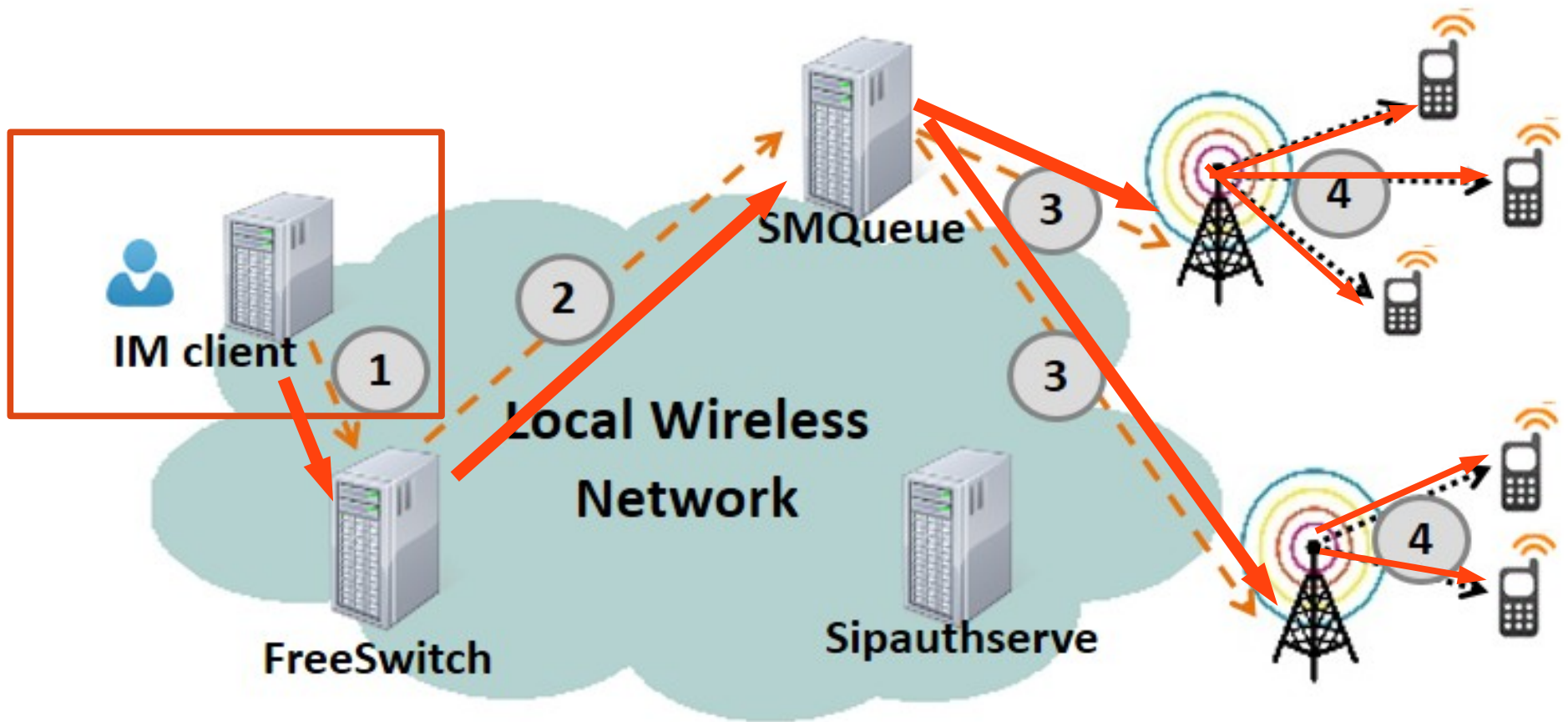
Instant Message to SMS



Instant Message to SMS



Instant Message to SMS



The Base Station



A RangeNetworks SNAP unit

Installation Sites

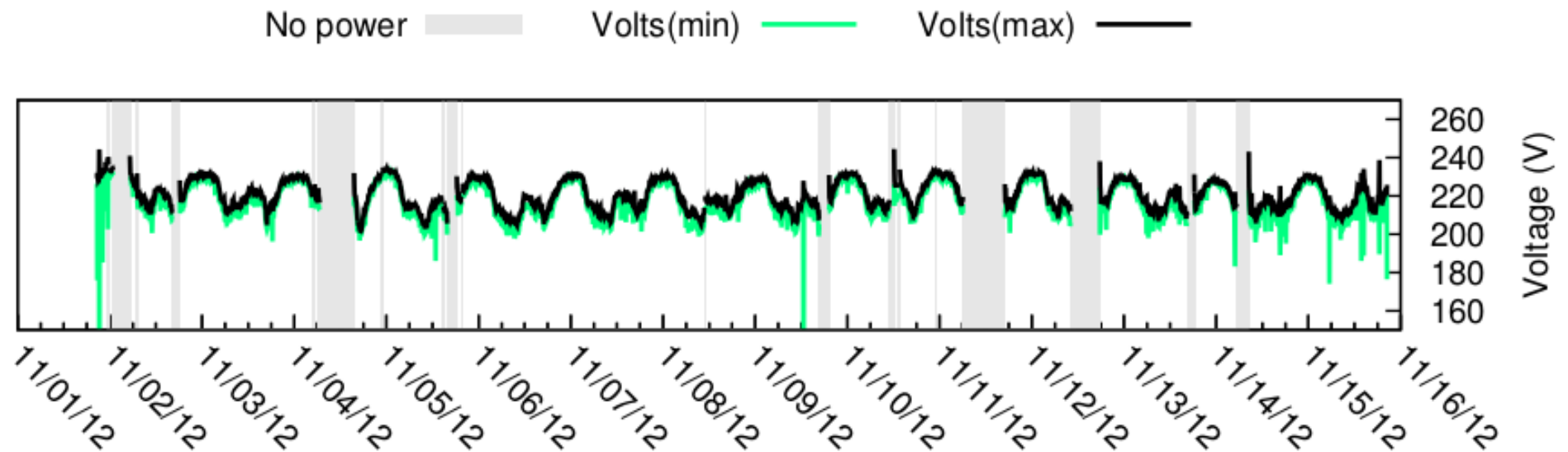


LITA

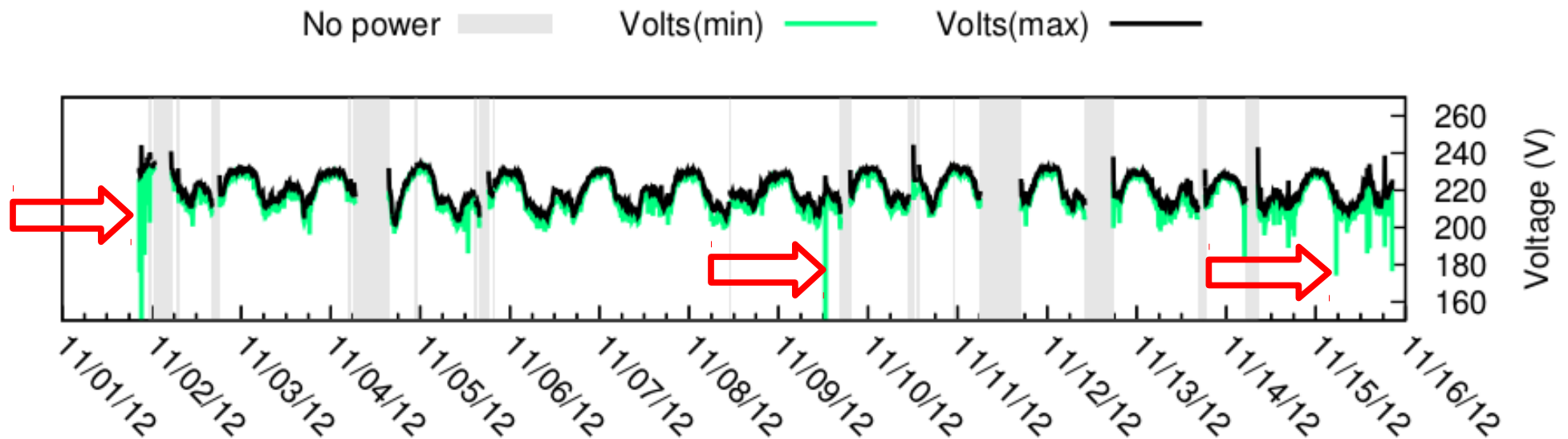


The Water Tower

Power Quality in Macha



Power Quality in Macha



The Power Supply



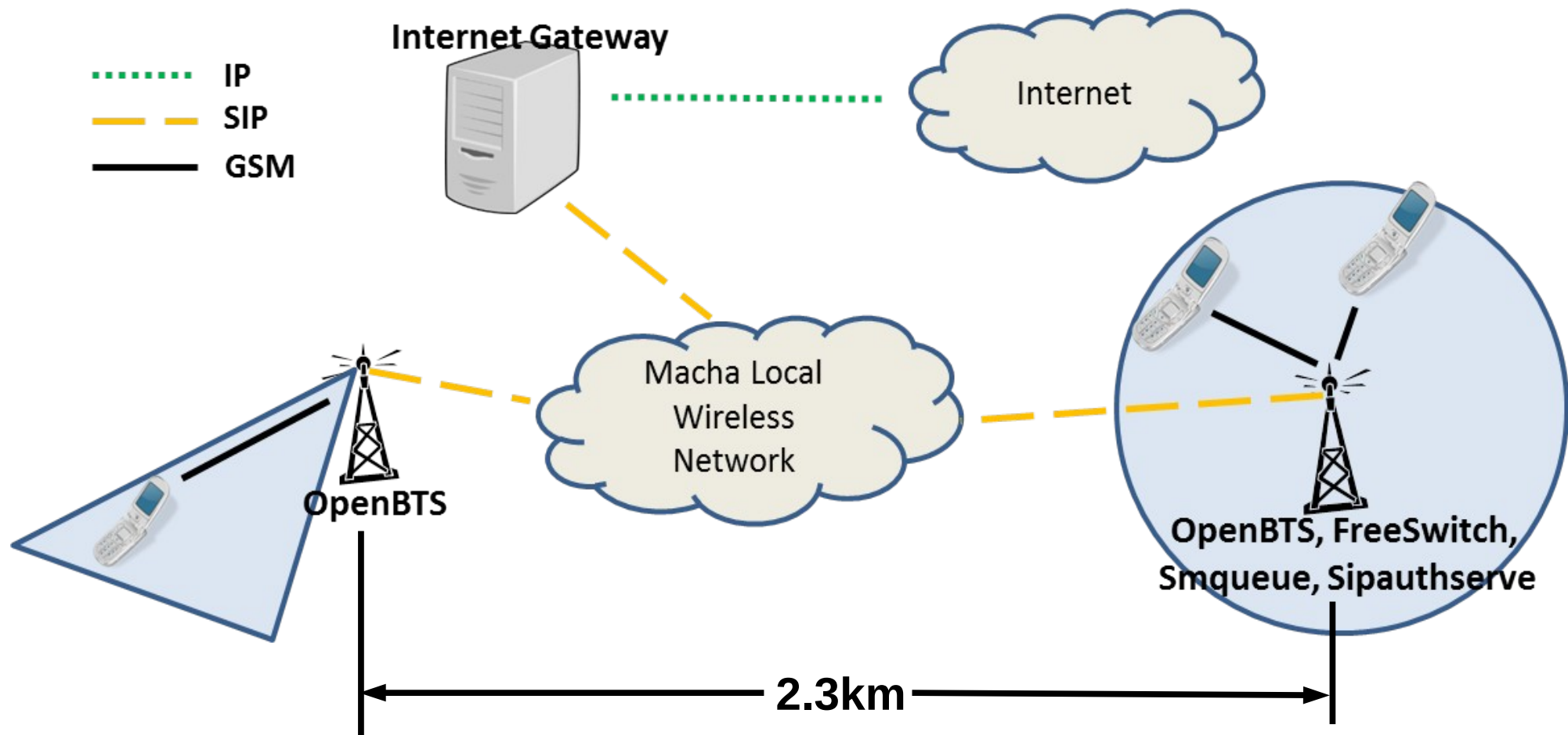
The Power Supply



The Power Supply



The Network in Macha

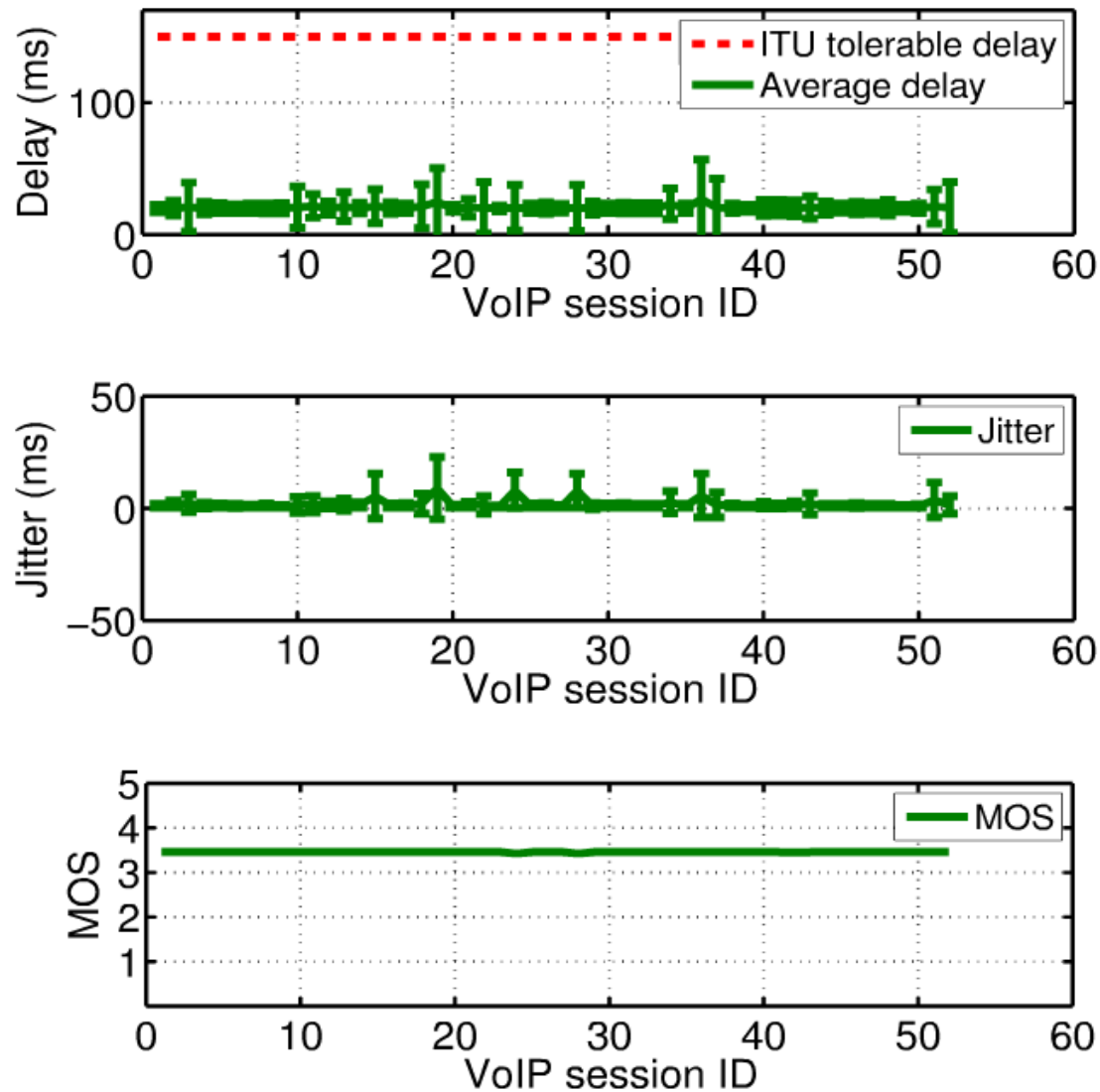


Evaluation Design

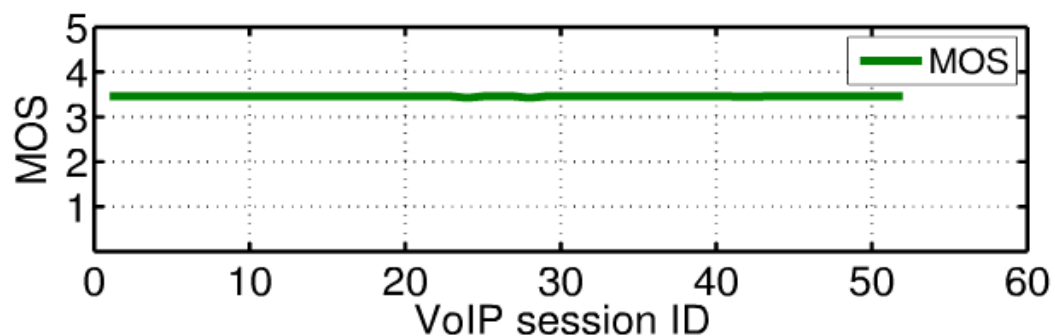
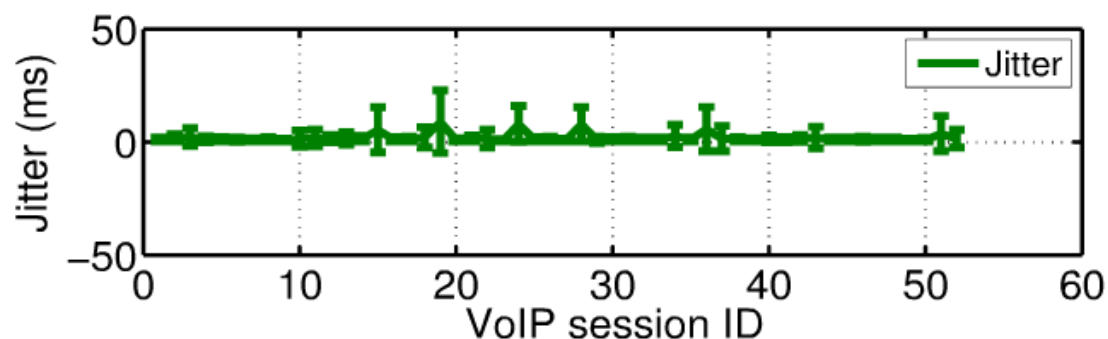
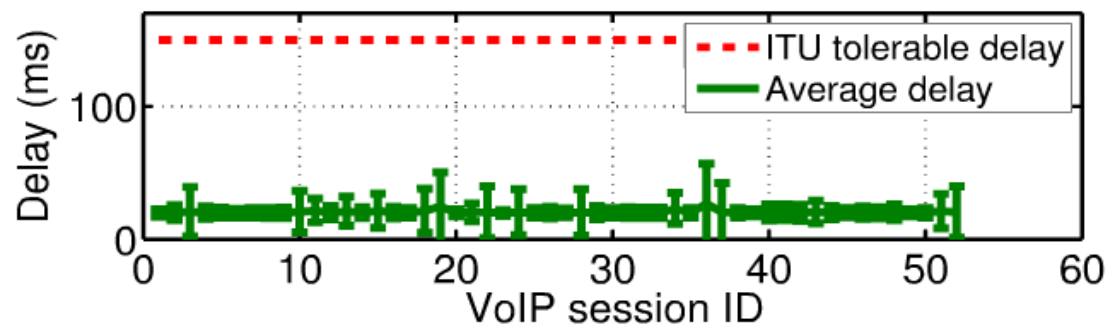
- 20 SIM cards
- Local partners (IT staff)
- Restricted registration
- Voice and SMS



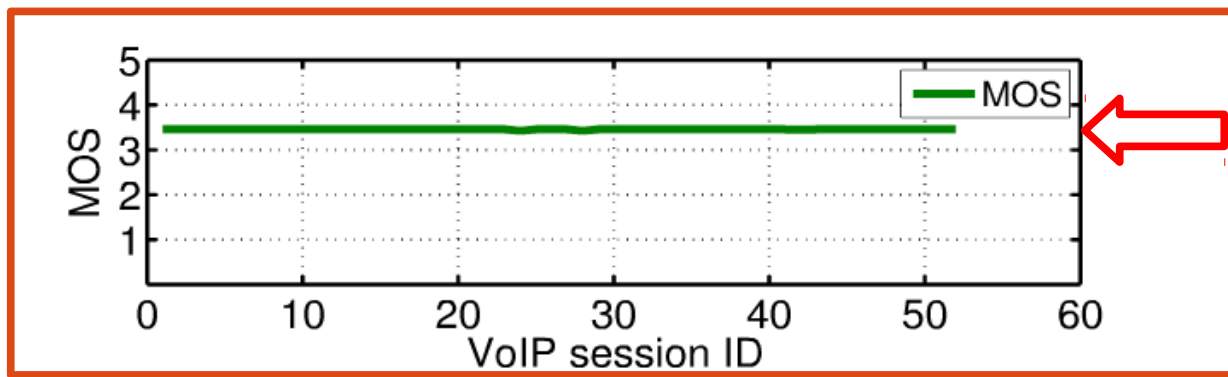
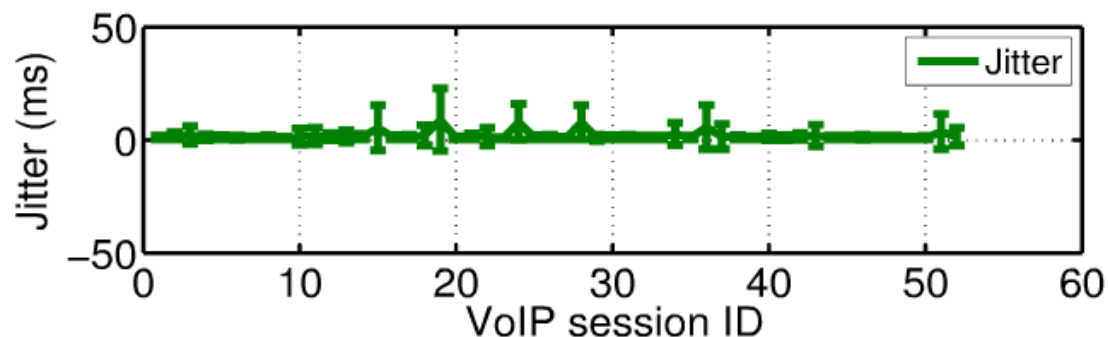
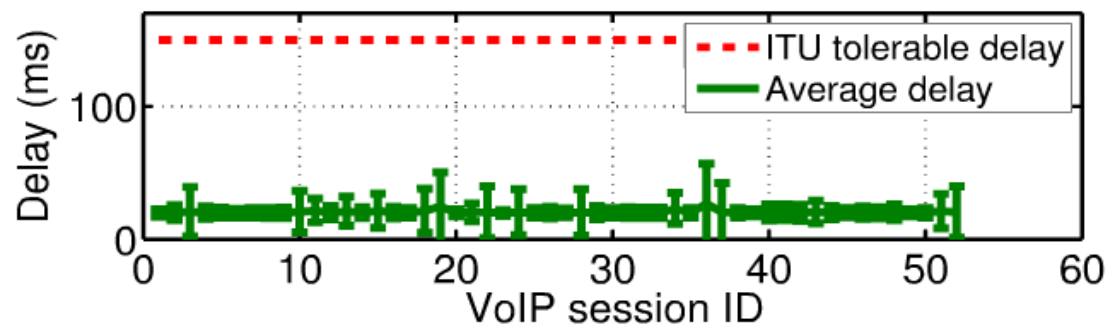
Call Quality



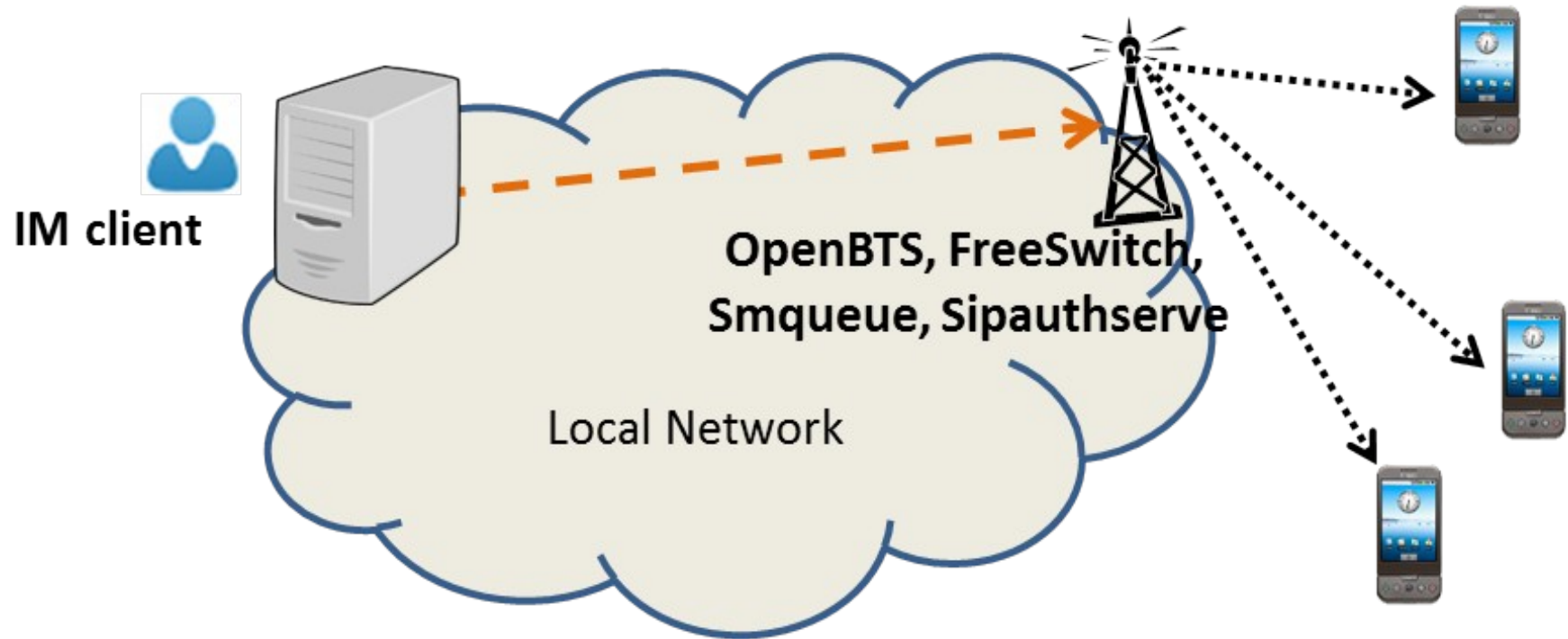
Call Quality



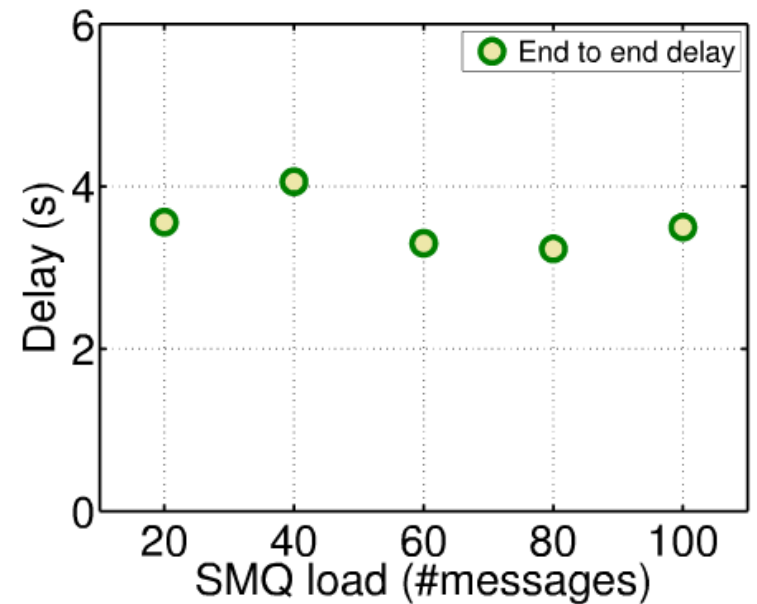
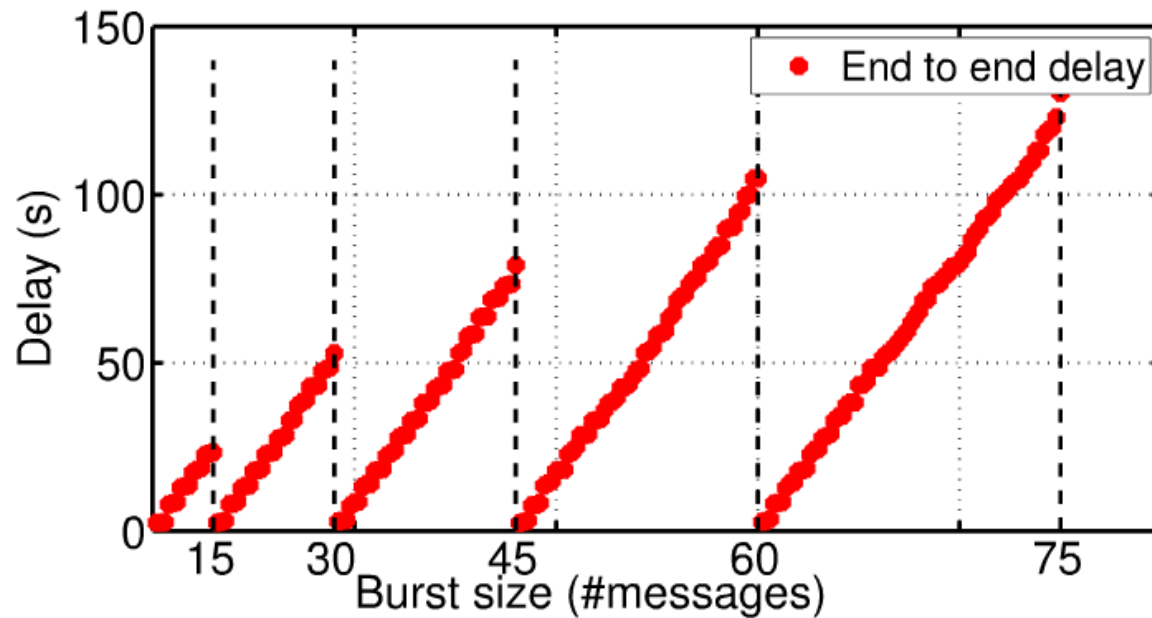
Call Quality



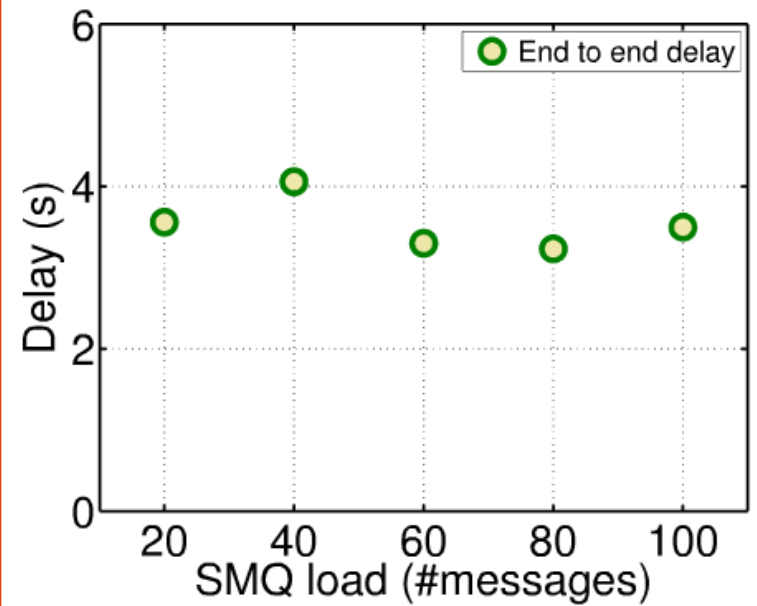
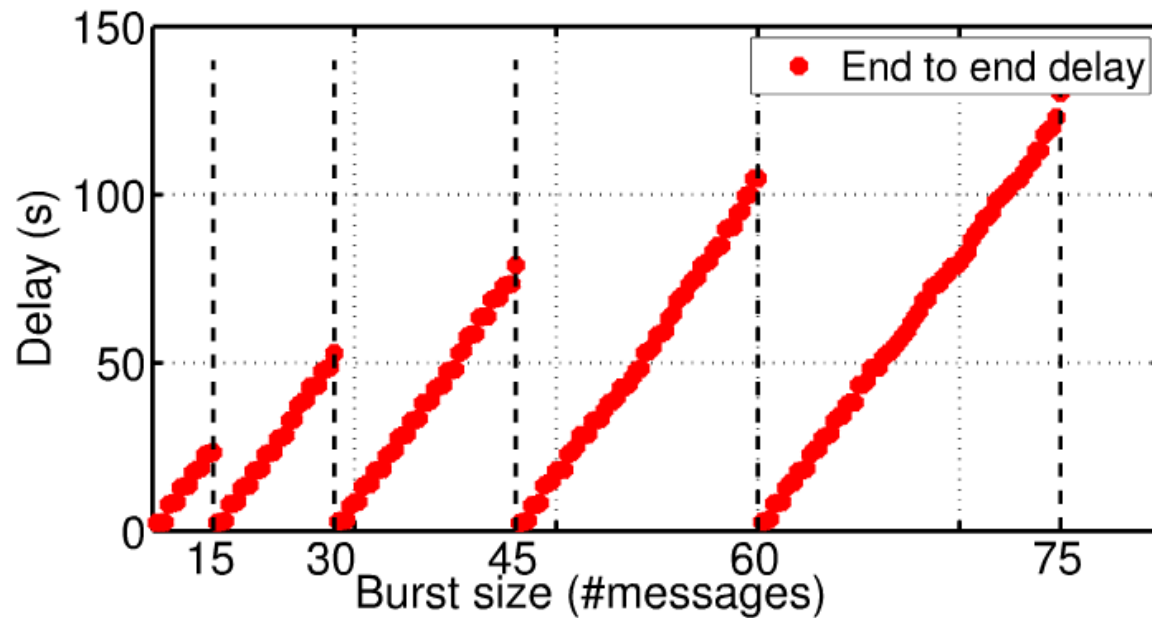
IM-SMS Performance



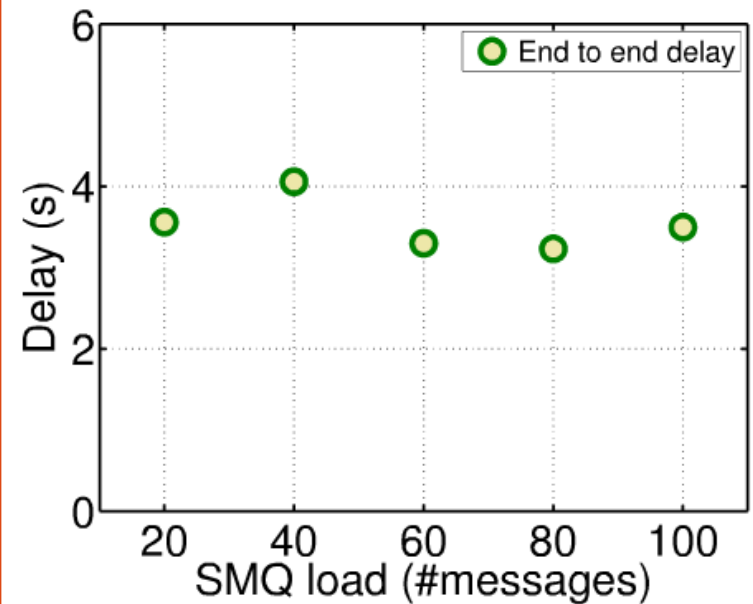
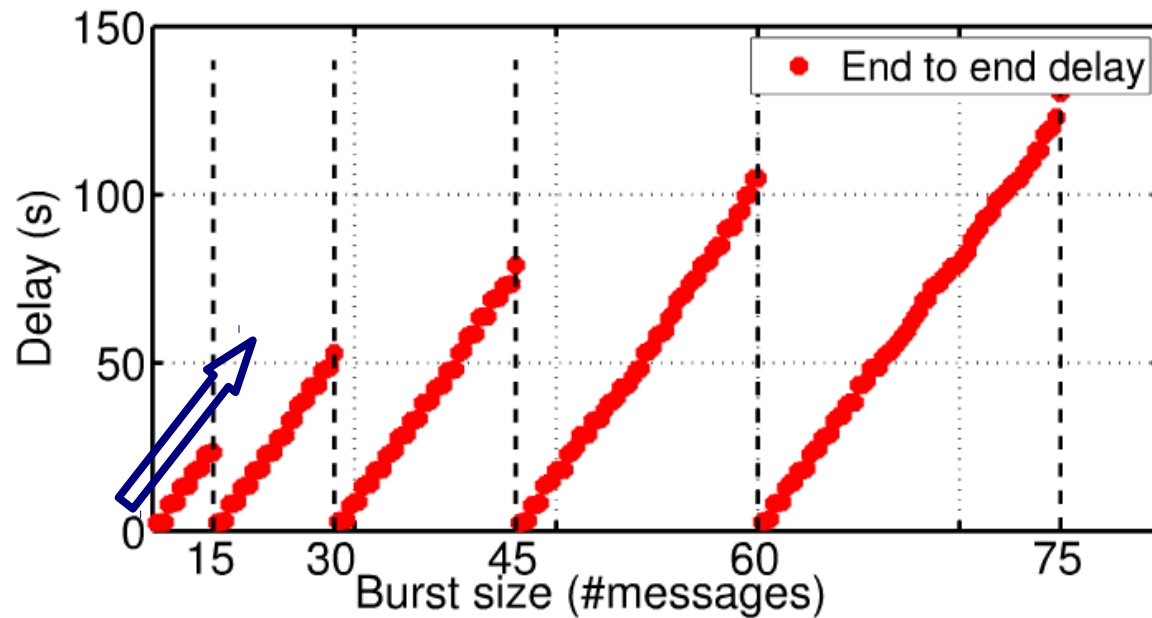
IM-SMS Performance



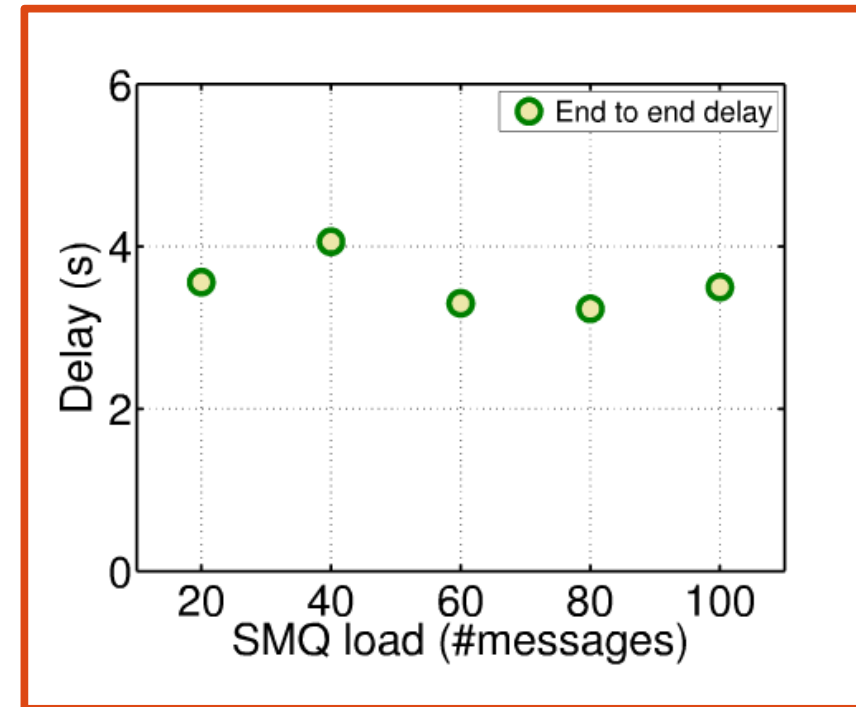
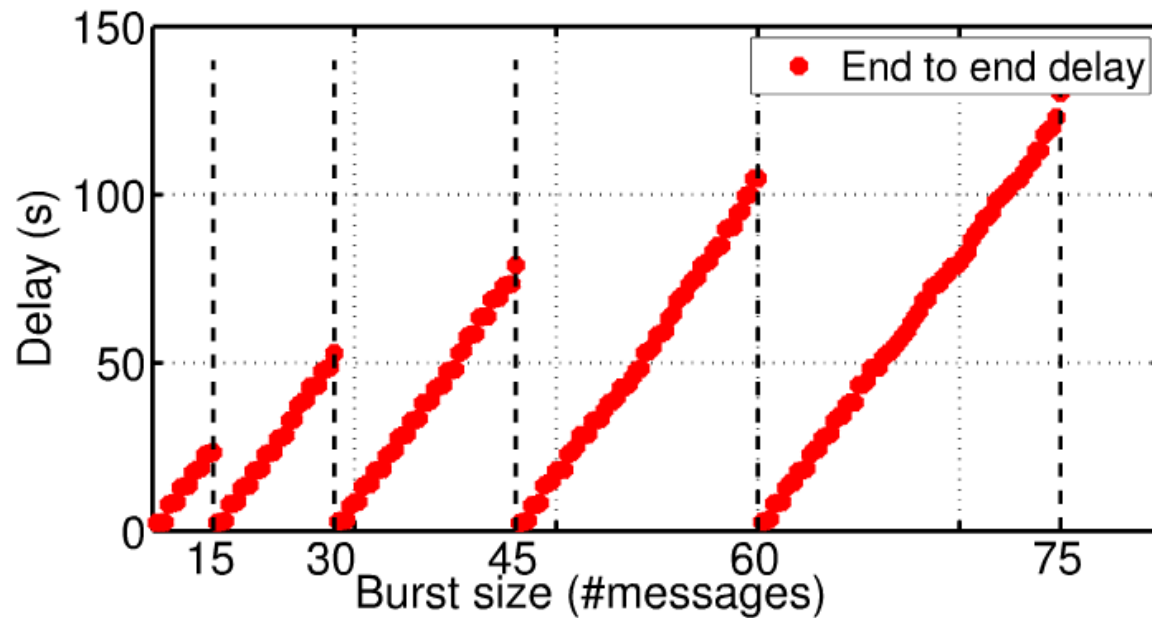
IM-SMS Performance



IM-SMS Performance



IM-SMS Performance





*The trash in front of a store in Macha is comprised of used talk-time vouchers.



Video

Edited by

Abigail Hinsman

Film and Media Studies, UCSB

and

Mariya Zheleva

Computer Science, UCSB

Interviews by

Prof. Lisa Parks

Film and Media Studies, UCSB



Thank you.

Mariya Zheleva
mariya@cs.ucsb.edu

Find out more at:
<http://moment.cs.ucsb.edu>

Acknowledgements:

LinkNet
RangeNetworks
NSF
Bill and Melinda Gates Foundation
David Kotz
Veljko Pejovic
Kate Milosavljevic